



AMSTERDAM

Lekstraat 63, 1079 EM
Tel. +31 20 301 29 50
Fax +31 20 301 29 60
Email: info@aagauctioneers.com
Website: www.aagauctioneers.com

GENEVA

Rue du Rhône 59-I
CH-1204
Tel. +41 22 310 33 32
Fax +41 22 312 02 03

JAKARTA

Jl. Pasuruan no. 9
10310
Tel. +62 21 315 86 36
Fax +62 21 398 99 533

SINGAPORE

30 Bideford Road #03-02
Thong Sia Building, 229922
Tel. +65 67 372 130
Fax +65 67 371 859





THE CHRISTMAS SPECIAL

508

Amsterdam

Auction: Monday 17 December 2018, 12 p.m.

Viewing: Friday 14 - Sunday 16 December, 10 a.m. - 5 p.m.

Please note:

Faults or imperfections are not recorded in the lot description.

We encourage you to inspect the lots during our viewing days.

Condition reports are available upon request.

You are requested to collect the acquired item(s) within five days after the auction.

After five days this can be done by appointment only.



PLEASE NOTE:

Faults or imperfections are not recorded in the lot description. We encourage you to inspect the lots during our viewing days. Condition reports are available upon request.

Before picking up your acquisition, the payment has to be received on bank account: NL28FVLB0637264002 in the name of Stichting Derdengelden. Payments in cash, debit- or credit card are accepted by AAG Auctioneers. For credit card payments a surcharge is applicable.

You are requested to collect the acquired item(s) within five days after the auction. After five days this can be done by appointment only.

AAG shall have the right to put items that have been sold but not yet collected into storage at the buyer's expense after five working days.

The applicable handling fee per item is:
transportation € 10,- / storage € 5,- per day.

DROIT DE SUITE

The applicability of Droit de Suite (The Artist's Resale Right) has taken effect on 1 April 2006 and applies to:

Original works of art by artists (alive or up to 70 years after death), being a national or an inhabitant of a country, member of the EU or EEA or of a country that applies a similar Droit de Suite.

Arts & Antiques Group BV will collect the legally compulsory Droit de Suite fee from the buyer for the financial settlement.

The Droit de Suite fee will be collected over a sale price starting at €3.000,- including the premium (excluding VAT) and will be calculated using a sliding scale of percentages of the sale price:

> € 3.000 - ≤ € 50.000	4%
> € 50.000 - ≤ € 200.000	3%
> € 200.000 - ≤ € 350.000	1%
> € 350.000 - ≤ € 500.000	0,5%
> € 500.000	0,25%

(with a maximum of €12.500,-)

INDEX

Abels, J.T.	372
Bauer, M.	373
Bierenbroodspot, G.	374
Cerneüs, R.	375
Corneille	376
Eikelenboom, A.	377
Elias, D.	378
Evers, P.	379, 380, 382
Eversen, J.	381
Fiedler, H.	383, 384
Franse, K.	385
Geest, C. van	386, 387
Gelderse Grafiekmap 1982	388
Gomes, K.	389
Haersholte, A. van	390
Henkes, D.	391, 392
Heyboer, A.	393
Hollander, G.	394
Hopman, M.	395
Jonk, N.	396
Kamerlingh Onnes, H.	397
Karsen, K.	398
Kat, O.B. de	399, 400
Kim, Geun Bae	401
Knip, W.A.	402
Kruyder, H.	403
Martens, W.	404
Mertz, J.C. <i>attributed to</i>	405
Monticelli, A.	406
Pudlich, R.	407
Repelius, B.	408
Ressel, A.	409
Roelofs, A.	410
Roelofs, W.	411
Rubens, P.P. <i>after</i>	412
Sartorius, V. de	414
Schoonhoven, J.	413, 415, 416
Schulten, T.	417, 418
Tadama-Groeneveld, T.	419
Toorop, Ch.	420
Veerman, L.	421
Velde, G. van	422
Veldhoen, A.	423
Wijngaerdt, P. van	424
Wolter, H.J.	425
Wunderlich, P.	426
Zeegen jr., A. van	427



W. B. F. 1870





NEUMANN & VETTIN B.V.

**Packers and shippers
of antiques and fine art**



www.neumannenvettin.com

**Langs de Werf 18-20 • 1185 XT Amstelveen • Holland
Postbus 9147 • 1180 MC Amstelveen
Tel. (020) 640 75 84
info@neumannenvettin.com**

HELEMAAL WEG VAN DE WEG

Annandale - Banks Peninsula, Nieuw-Zeeland

U bent even onderweg om een prachtige verlaten weg te vinden zoals deze. Maar wanneer u er één vindt, vindt u er vele. Aan de andere kant van de aarde. In een land beroemd om haar natuur, verschillende landschappen en gastvrijheid. Nieuw Zeeland. U rijdt door oeroude regenwouden, langs slapende vulkanen en over kronkelende kustwegen.

Om u goed op weg te helpen, zorgen wij ervoor dat u uitgerust in Nieuw-Zeeland aankomt. Geen gedoe met parkeren of volle treincoupés. Wij brengen u graag met

een privé chauffeur naar het vliegveld, vanwaar u boven in de wolken zult zijn in uw ruime First Class ligstoel. Hemelse spijs, wijn, films of een goed boek geven u al helemaal het gevoel op weg te zijn.

Beleef Nieuw-Zeeland à la TravelEssence. In een rustig tempo, via plaatsen waar u zelf nooit gekomen zou zijn.

Uw wensen. Onze kennis. Uw perfecte reis.
www.travelessence.nl | 030 272 5335

TRAVELESSENCE
Nieuw-Zeeland • Australië





UNIEK VERZEKERINGSCONCEPT VOOR VERMOGENDE PARTICULIEREN, ONDERNEMERS EN FAMILIES

Paardekooper
Private Insurance is
één van de weinige
verzekeringkantoren in
Nederland dat zich met
een totaalconcept specifiek
richt op deze bijzondere
categorie relaties.

Paardekooper Private Insurance is al ruim 25 jaar gespecialiseerd in het verzekeren van bijzondere bezittingen zoals (rietgedekte) villa's, woonboerderijen, grachtenpanden, waardevolle inboedels, kunst, kostbaarheden, exclusieve auto's, vakantiehuisen (in het buitenland) en onroerend goed portefeuilles van particuliere beleggers. Maar ook zakelijke verzekeringen, alsmede financiële planning, pensioen- en levensverzekeringen zijn onze specialisaties en bieden wij onze bijzondere clientèle aan. Het Paardekooper Totaalconcept staat hierbij centraal: nieuwe relaties

ontvangen een voorstel voor hun gehele verzekerings situatie (particulier en/of zakelijk). Het resulteert direct in: een overall upgrade in dekking, doorlopend lagere premies, meer inzicht, betere structuur en uniformiteit in de portefeuille. Geheel toegesneden op de persoonlijke voorkeuren.

Het unieke verzekeringsconcept is speciaal ontwikkeld voor vermogende particulieren, ondernemers en families. Indien wij uw nieuwsgierigheid hebben gewekt, dan verzoeken wij u contact met ons op te nemen.

Ruim 25 jaar gespecialiseerd in het verzekeren van waardevolle bezittingen

Paardekooper

private insurance

Soestdijkseweg 247, Bilthoven

+31 (0)30 30 32 100

www.paardekooper.net



NOBLE HOUSE VALUATION
Art, Antiques & Movable Assets

HÉT INTERIEURMAGAZINE VOOR
DE KOSMOPOLIET MET EEN
KLOPPEND HART VOOR KUNST

10x
VOOR
€48,50





Tentoonstelling

**Dineren
aan de gracht
Museum
Van Loon**

5 okt 2018 – 14 jan 2019

Dagelijks te zien van 10.00 tot 17.00 uur



HARROGATE

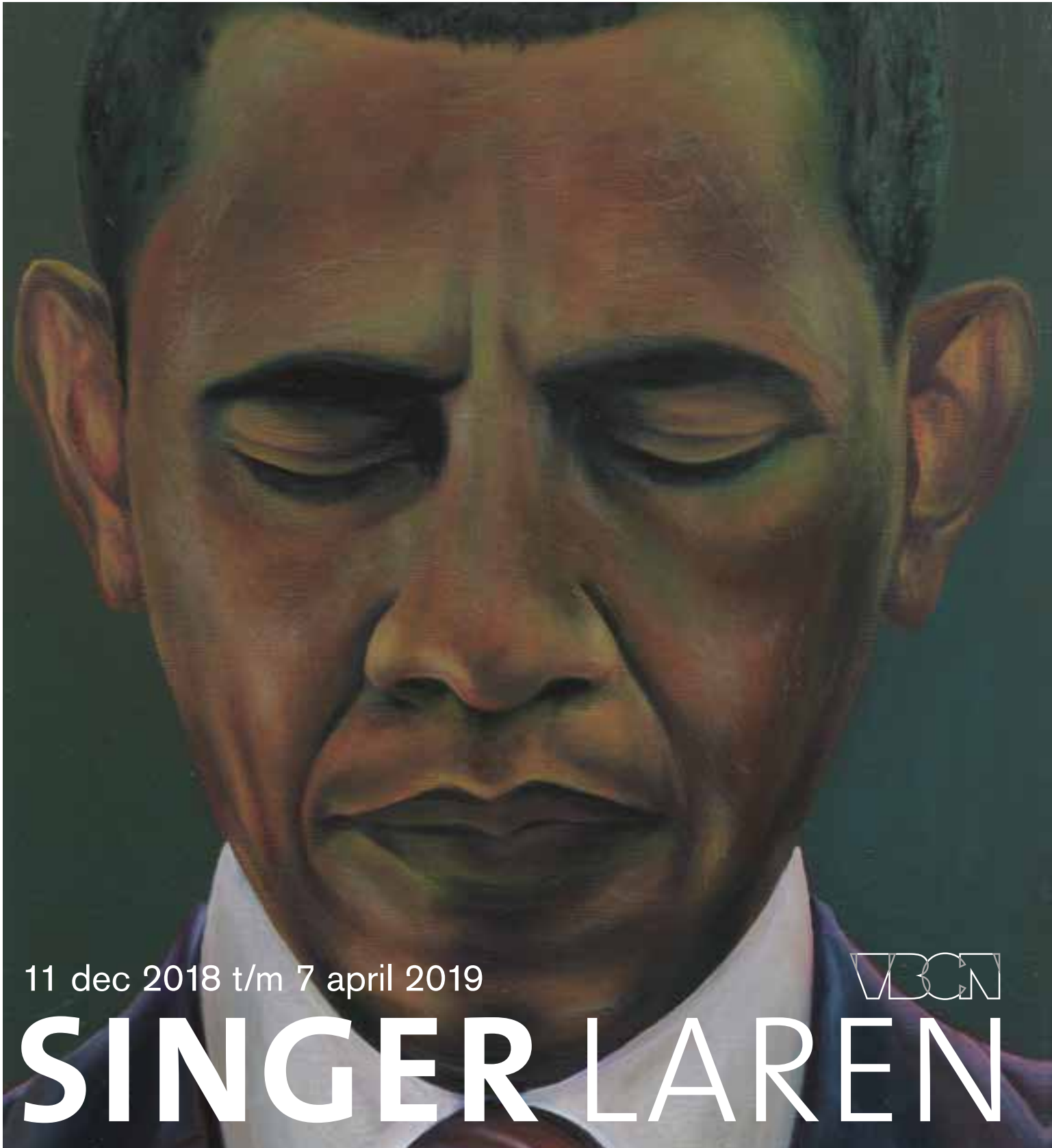
SPRING WATER



HARROGATE.NL

out of office

kunstschatten uit bedrijven



11 dec 2018 t/m 7 april 2019

SINGER LAREN

VBCN



Dutch Inventory Brokers is gespecialiseerd in het complete traject boedelafwikkeling van nalatenschappen. Van advies en transport tot en met taxatie en verkoop. In het bijzonder richt Dutch Inventory Brokers zich op het hogere segment kunst, antiek en design. Bij nalatenschappen verzorgt Dutch Inventory Brokers ontruiming van huis of appartement en is deskundig en respectvol partner voor familieleden.

Kunsthistoricus Kati Wieg is met jarenlange ervaring en kennis van de kunstmarkt één van de drijvende krachten achter Dutch Inventory Brokers. Van Oude Meesters tot en met Moderne en Hedendaagse schilderijen, sculpturen, antiek, juwelen en design begeleidt Dutch Inventory Brokers nabestaanden. Jan-Willem Königel en Kati Wieg vormen de directie en verzorgen de gehele boedelafwikkeling van A-Z.

Dutch Inventory Brokers werkt onder meer samen met Private Wealth relaties en cliënten van financiële instellingen, Family Offices en adviseert notarissen, advocaten en accountants.





**fab
fabrics**

www.fabfabrics.nl
info@fabfabrics.nl

De
Mesdag
Collectie

Den Haag

A woman stands in a pool of water, her arms outstretched. She is standing on a large watermelon. The water is a clear, light blue-green color. The woman is wearing a light-colored, possibly white, swimsuit. Her hair is dark and styled in a short, wavy bob. The background shows the ripples of the water and the horizon line.

de
zindering
van de zee

een eerbetoon
aan Bas Jan Ader

met o.a. Viola - Goldin
Fabre - Dibbets

14.09.2018_06.01.2019
www.demesdagcollectie.nl



Ministerie van Onderwijs, Cultuur en
Wetenschap



Van Lanschot
SINDS 1737



0
SLOW FAST
15 15
30

STRIKE
SILENT

60
55 5
50 10
45 15
40 20
35 25
30

III
IIII
V
VI
VII
VIII
IX
X
XI
XII

III
IIII
V
VI
VII
VIII
IX
X
XI
XII



1
A set of four Dutch silver candlesticks
 Mark of *n.v. Zilverfabriek Voorschoten*, 1957
 Each on circular base and fluted stem, filled bases.
 H. 16.5 cm
 Gross weight 1138 gr.
 (4x)
 € 600 - 800



2
A pair of German silver candlesticks
 Mark of *Johann Philipp Heckenauer, Augsburg*, 1741-43, also stamped with later Dutch marks 'V' and 'ZII'
 Each raised on a square foot supporting a column-shaped stem, the top parts applied with garlands, with detachable nozzles.
 H. 20.5 cm
 Weight 540 gr.
 (2x)
 € 800 - 1.200



3
A pair of silver Louis XVI-style candlesticks
 Marked "'92?' and 'ZI'
 Each on square stepped foot supporting a column-shaped stem with Corinthian capital, with beaded mouth rims, with infilled bases.
 H. 15.7 cm
 Gross weight 840 gr.
 (2x)
 € 600 - 800



4
A pair of Dutch silver candlesticks
 Mark of *Zaanlandse Zilvermederij, Amsterdam*, 1964
 Each in Louis XV style with domed scrolled foot, the baluster stem chased with scrolls, with scroll capitals and detachable nozzles, the bases filled.
 H. 20.7 cm
 Gross weight 1028 gr.
 (2x)
 € 600 - 800



5

An elaborate pair of Dutch Rococo silver candlesticks

Mark of Valentijn Caspar Beumke, Amsterdam, 1770

Each on a shaped scroll and spirally fluted domed base, rising to a baluster spirally fluted stem supporting a similar decorated capital with detachable nozzle.

H. 24.5 cm

Weight 912 gr.

(2x)

€ 4.000 - 6.000



6

A set of two Dutch silver biscuit boxes*Mark of Hendrik Buysen, Amsterdam, 1790*

One of circular and one of rectangular form, with beaded borders and each with an engraved decorative border to the hinged cover.

W. 15.2 cm (rectangular box)

Diam. 12.3 cm (circular box)

Weight 942 gr.

(2x)

€ 2.500 - 4.000



7

Two Dutch silver trays

One with mark of Abraham Bernardus van Grasstek, Amsterdam, 1850; the other with maker's mark indistinct, date mark 1916 and both with a retailer's mark

The first of rectangular shape with beaded border; the other of oval shape with openwork gallery and beaded border.

W. 29 / 35.5 cm

Weight 1295 gr.

(2x)

€ 700 - 1.000



8

An English silver circular tray

Mark of William Hutton and Sons, London, 1898

Raised on three scroll feet, the shaped sides with scrollwork.

Diam. 35 cm

Weight. 1523 gr.

€ 600 - 800



9

A Dutch silver cabaret

Amsterdam, 1778, maker's mark indistinct, possibly 'HD'

The square tray on four flat round legs, the sides decorated with shell and leaf motives.

Weight: 486 gr.

W. 22.5 x D. 22.5 cm

€ 600 - 800



10

A Dutch silver oval tray

Mark of Kon. Utrechtse Fabriek van Zilverwerk C.J. Begeer, Utrecht, 1911

The oval tray with an openworked scroll and floral gallery, with glass liner.

W. 53.5 cm

Weight 2007 gr.

€ 600 - 1.000



11
A Colonial silver and gold-mounted box and cover
Apparently unmarked, possibly former Dutch East Indies, possibly 18th century
 Of rectangular shape, the sides and base engraved with foliate borders, the hinged gold-mounted cover chased with flowers and foliage. H. 4 X W. 9.4 X D. 5.6 cm. Weight 120 gr.
 Provenance:
 - Collection Haji Syamsuddin, Indonesia
 - Private collection, Noord-Brabant
 € 600 - 800



12
A Dutch silver openworked basket
Mark of Fa. J. M. van Kempen & Zonen, Voorschoten, first half 20th century
 The oval basket openworked with birds amongst flowers, the sides with two scroll handles.
 W. 30.8 cm.
 Weight: 427 gr.
 € 600 - 800



13
A Dutch silver Art Deco coffee service
Mark of J.M. van Kempen & Zonen, Voorschoten, 1919
 Comprising a mocha-pot, sugar-bowl, milk-jug, spoon-vase and oval tray, all of rounded shape and with rosewood handles and finial.
 Gross weight approx. 918 gr.
 H. 11.5 / 4.5 / 5.5 / 5.5 / L. 33.5 cm
 (5x)
 € 700 - 900



14
A set of two Dutch silver biscuit boxes on trays
Mark of Fa. J.M. van Kempen & Zonen, Voorschoten, 1917, the circular tray 1922
 One of rectangular form and one of circular form, each with reeded rims and hinged covers, each on accompanying tray.
 W. 20.5 cm (the rectangular tray)
 Diam. 18.4 cm (the circular tray)
 Weight 1294 gr.
 (4x)
 € 600 - 800



15

A Dutch silver beaker

Dordrecht, second half 17th century, maker's mark indistinct
With flared rim, engraved with foliage and hanging fruit festoons, the lower part engraved with three birds on rockwork. With double stand ring.

H. 14.5 cm

Weight approx. 195 gr.

€ 6.000 - 8.000



16
A German silver *Historismus* chalice and cover
Hanau, circa 1900, stamped '800'

Standing on a domed base with knobbed stem, the cup applied with winged female figures, further chased with flowers surrounding a vacant cartouche flanked by cupids, the finial shaped as an eagle clasp. H. 40 cm

Weight 839 gr.

Provenance:

Private collection, the Netherlands

€ 500 - 700



17
A collection of various silver and silver-plated serving ladles, tongs, a butter knife and a set of twelve silver-plated knives

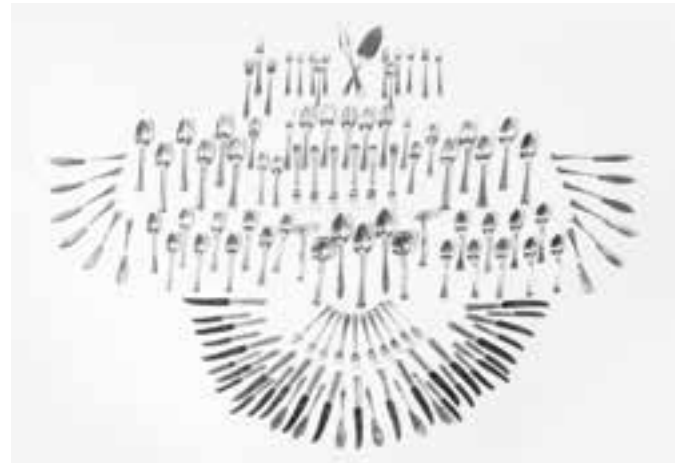
Various marks

Comprising a fried egg ladle; an openworked fish ladle; a caster spoon; a boiled egg ladle; a serving ladle; two sets of tongs; a butter knife; a soup ladle, and a set of twelve knives with shell-shaped handles.

L. 36.5 cm (largest)

(20x)

€ 600 - 800



18
A collection of Dutch silver flatware

Various marks

The Fa. J.M. van Kempen cutlery comprising ten fish forks and twelve fish knives; eleven table spoons; twelve table forks, each with double reeded rims; five spoons; seven forks with pointed reeded rims; seven cake forks; two fish forks and six fish knives; a soup ladle; three various serving ladles; two gravy ladles; two vegetable ladles; two meat forks; thirteen table knives; five knives; eleven dessert knives. The Gebr. Huisman cutlery comprising eighteen table spoons; ten table forks; seven cake forks; five coffee spoons; two tea spoons; a cake slice.

L. 21.2 cm. Weight: 6370 gr. (excl. knives)

(154x)

€ 1.000 - 2.000



19
A Dutch silver basket and one silver-plated serving bowl with liner and cover

The basket with the mark of Hendrik Smits, Amsterdam, circa 1810 and retailer's mark Diemont; one bowl with the mark of the Württembergische Metalwarenfabrik, 20th century

The basket of lozenge shape, the bowl and liner both with two handles. W. 31 cm (basket)

Diam. 30.4 (serving bowl)

Weight 820 gr. (basket)

(2x)

€ 600 - 800



20
A Dutch silver miniature set of two biscuit boxes on a tray and two small 'loderein' snuff boxes

Mark of J.S. & S. Zwanenburg, Sneek, 1900-1933; one snuff box marked with provincial lion and 'ZII'; the other snuff box with '900'

One biscuit box of circular and one of rectangular form, the covers engraved with a star, on a rectangular tray with shaped and engraved border; a small snuff box, the domed cover engraved with monograms; a small snuff box chased with the Virgin Mary and Child. H. 1.7 - 2.6 cm / W. 7.5 cm (the tray)

€ 600 - 800



21
Two Dutch silver pill boxes and a 'loderein' snuff box
One with indistinct maker's mark, Schoonhoven, 1860; one with indistinct maker's mark and date letter 1861; one with the mark of J.P. Sperna Weiland, Schoonhoven, 1852

One pill box with shaped cover and engraved with stylised floral motives; one pill box with shaped cover and engraved with flowers; and one snuff box engraved with scrolls on the cover and with reeded sides. W. 5 - 7.2 cm

Weight 94 gr.

(3x)

€ 600 - 800



22
Two Dutch silver 'loderein' snuff boxes

One with the mark of Dirk Goedhart, Amsterdam, circa 1800; one with indistinct marks and with later mark 'Z' for 800/1000
 Both in the shape of a casket, one chased with farmer's scenes and the other with a milkmaid.

H. 2.7 - 3.2 cm

Weight 65 gr.

(2x)

€ 600 - 800



23

Five Dutch silver 'loderein' snuff boxes

One with the mark of Christiaan Jacobs Bruinings, Joure, 1869; one with the mark of Christiaan Jacobs Bruinings, Joure, 1897; one with date letter 1876; one with date letter 1834 and indistinct maker's mark; and one with date letter 1839 and indistinct maker's mark

All of rectangular shape. H. 3 - 4.2 cm

Weight 152 gr.

(5x)

€ 600 - 800



24

Three Dutch silver 'loderein' snuff boxes

One with mark of Carolus Henderikus Cammans, Leeuwarden/Groningen, circa 1860; one with mark of Gebr. S. & H. Reitsma, Sneek, 1901; and one with indistinct maker's mark, date letter 1864

Each of high, rectangular shape and variously engraved with scrolls and decorative bands. H. 5 - 5.3 cm

Weight 65 gr.

(3x)

€ 600 - 800



25

Three Dutch silver 'loderein' snuff boxes

One with mark of A. Kooiman, Schoonhoven, 1838; one with indistinct maker's marks, Schoonhoven, 1860; and one probably with the maker's mark of Pieter Jacobus van Geelen, Schoonhoven, 1871

Each of rectangular shape, one chased to the cover with palmettes and with reeded sides; one chased to the sides with Gothic arches; and one engraved with a view on a village.

H. 3.3 - 4 cm / Weight 74 gr.

(3x)

€ 600 - 800



26

Three Dutch silver 'loderein' snuff boxes

One with indistinct maker's mark, Schoonhoven, 1805; one with maker's mark ?B, Schoonhoven, 1800; one with maker's mark possibly MG and marked with a sword

One shaped as a book; one shaped as a book and engraved with a flowers; and one shaped as a desk.

H. 3 - 3.4 cm

Weight 59 gr.

(3x)

€ 600 - 800



27

Three Dutch silver 'loderein' snuff boxes

One with the mark of Gerben Wouda, Drachten, 1839; one with date letter 1835; one with the mark of Cornelis van Hoek, Amsterdam, 1807

One shaped as a bucket, the cover chased with flowers; one shaped as a bucket with shell-shaped cover; and one of high rectangular lobed shape chased with farmer scenes.

H. 3 - 3.5 cm / Weight 48 gr.

(3x)

€ 600 - 800



28

Three Dutch silver 'loderein' snuff boxes

One with the mark of Wouter Kuijlenburg, Schoonhoven, 1844; one with the mark of Carolus Hendericus Cammans, Leeuwarden/ Groningen, 1862; and one with indistinct maker's mark, date letter probably 1888

One box engraved with decorative bands and cartouche with monogram; one of octagonal shape engraved with scrolls and decorative bands, the cover with a windmill; and a box with reeded bands. H. 3.5 - 4.5 cm / Weight 57 gr.

(3x)

€ 600 - 800



29

Three Dutch silver 'loderein' snuff boxes

One with mark of Cornelis Monteban, Schoonhoven, 1874; one with mark of Willem Lobensteijn, Schoonhoven, 1861; one with date letter 1860

One of octagonal shape and engraved with scrolls; one of lobed form and engraved with foliage; and one with decorative bands. H. 3.4 - 4.4 cm

Weight 60 gr.

(3x)

€ 600 - 800



30

Three Dutch silver 'loderein' snuff boxes

One with indistinct maker's mark, date letter 1820; one marked with sword; one with counterfeited marks

Two shaped as a cabinet; and one shaped as a cupboard.

H. 3.9 - 4.2 cm

Weight 75 gr.

(3x)

€ 600 - 800



31
An 18 carat white gold and diamond necklace
 21st century

The cushion-cut diamond within diamond set surround to a diamond loop. With GIA certificate stating the diamond is 0.51 ct, colour M, clarity IF, numbered 1166851396 and dated 16-12-2014.

Gross weight approx. 5.6 gr.

L. approx. 40 cm (necklet)

L. approx. 1.5 cm (pendant)

€ 1.000 - 1.500



32
An 18 carat white-gold necklace with diamond pendant
 21st century

The necklace suspending a heart-shaped diamond pendant, accompanied by a GIA certificate stating the diamond is 1.01.ct, colour J, clarity SI1, numbered 6245777804 dated 25-01-2017. Gross weight approx. 3.1 gr.

L. approx. 40 cm

€ 2.000 - 2.500



33
A pair of 18 carat white gold and diamond ear studs
 21st century

Each set with a circular-cut diamond.

Total diamond weight approx. 0.50 ct

Gross weight approx. 1 gr.

Measured and weighed in the mount

(2x)

€ 700 - 900



34
A pair of 18 carat white gold and diamond ear studs
 21st century

Each set with a circular-cut diamond.

Total diamond weight approx. 1.00 ct

Gross weight approx. 1.2 gr.

Measured and weighed in the mount

(2x)

€ 1.200 - 1.600



35

An 18 carat white gold and diamond eternity band ring

21st century

Set with eighteen circular-cut diamonds.

Total diamond weight approx. 2.60 ct

Gross weight approx. 3 gr.

Ring size 55/17 1/4

Measured and weighed in the mount

€ 4.000 - 4.500



36

A palladium and diamond ring*20th century*

Centered by an openwork foliate old-cut diamond set motif, and rose-cut diamond detail.

Total diamond weight approx. 0.45 ct

Gross weight approx. 3.3 gr.

Ring size 53/17

Measured and weighed in the mount

€ 600 - 800



37

An 18 carat white gold and diamond single stone ring*21st century*

Centered by a circular-cut diamond to a plain white gold band.

Diamond approx. 0.50 ct

Colour ca. G/H, clarity ca. VS.

Gross weight approx. 4.2 gr.

Ring size 55/17 1/2

Measured, graded and weighed in the mount

€ 1.800 - 2.000



38

An 18 carat white gold and diamond ring*21st century*

The shaped ring set with eight baguette-cut, eight square-cut and multiple circular-cut diamonds to a partly plain band.

Total diamond weight approx. 1.40 ct

Gross weight approx. 4.8 gr.

Ring size 55/17 1/2

Measured and weighed in the mount

€ 1.000 - 2.000



39

A 14 carat white gold and diamond ring*Circa 1960*

Centered by a line of circular-cut diamonds, flanked by a line of carré-cut diamonds.

Total diamond weight approx. 1.20 ct

Gross weight approx. 4.3 gr.

Ring size 60/19

Measured and weighed in the mount

€ 600 - 800



40

An 18 carat white gold and diamond single stone ring

21st century

The band partly set with circular-cut diamonds, centered by a circular-cut diamond weighing approx. 1.00 ct.

Total weight diamond approx. 1.30 ct

Gross weight approx. 4.5 gr.

Ring size 54/17 1/4

Measured and weighed in the mount

€ 2.600 - 2.800



41
A pair of 14 carat gold, silver and diamond ear pendants
The Netherlands, circa 1900
 Designed as a cluster at the ear, with pear-shaped drop suspending from a line, all rose-cut diamond set.
 Gross weight approx. 7.8 gr.
 L. approx. 4.5 cm
 (2x)
 € 1.000 - 1.200



42
A pair of 14 carat white gold and diamond ear pendants
Circa 1960
 Each set with a circular-cut diamond at the ear, suspending a flower head, centered by a diamond from a circular-cut diamond line. Total diamond weight approx. 2.50 ct
 Colour approx. H-J, clarity approx. VS2-Si1
 Gross weight approx. 7.2 gr. / L. approx. 4 cm
Measured, graded and weighed in the mount
 (2x)
 € 1.200 - 1.800



43
A pair of 18 carat white gold diamond and aquamarine ear pendants
21st century
 Each with pear-shaped aquamarine within circular-cut diamond surround.
 Total aquamarine weight approx. 4.95 ct
 Total diamond weight approx. 1.50 ct
 Gross weight approx. 8.6 gr. / L. approx. 3.5 cm
Measured and weighed in the mount
 € 1.400 - 1.800



44
A pair of diamond and emerald ear pendants
Early 20th century
 Each designed as an old-cut diamond set cluster, suspending a line and an emerald drop within old-cut diamond border.
 Below Dutch legal alloy
 Total diamond weight approx. 1.00 ct
 Total emerald weight approx. 0.50 ct
 Gross weight approx. 4.3 gr. / L. 3.2 cm
Measured and weighed in the mount
 € 1.800 - 2.000



45

A pair of 18 carat white gold and diamond ear studs

21st century

The circular-cut diamonds in plain white-gold mount.

Diamond total weight approx. 4.00 ct

Colour ca. L-M, clarity ca. Si

Gross weight approx. 3.7 gr.

Measured, graded and weighed in the mount

€ 10.000 - 12.000



46

An 18 carat white gold and diamond bracelet

21st century

The diamond line bracelet set with circular-cut diamonds flanked by diamond detail.

Diamond approx. 2.50 ct

Colour ca. J/K clarity ca. SI2-P1

Gross weight approx. 7 gr.

L. approx. 17 cm

Measured, graded and weighed in the mount

€ 1.600 - 1.800



47

A 14 carat white gold and diamond line bracelet

20th century

Designed as a graduating line of collet set circular-cut diamonds to linked gold band.

Total diamond weight approx. 1.35 ct

Gross weight approx. 9.9 gr.

L. approx. 18.5 cm

Measured and weighed in the mount

€ 800 - 1.200



48

A 14 carat gold, diamond and garnet bangle

Circa 1900

At the wrist centered by two clusters, each centered by a cushion-cut garnet, within old-cut diamond surround, the bangle partly set with a graduating set of old-cut diamonds.

Total diamond weight approx. 2.50 ct

Gross weight approx. 18 gr.

Diam. approx. 6 cm

Measured and weighed in the mount

€ 2.000 - 3.000



49

An 18 carat gold bracelet*Circa 1970*

Designed as three flexible satined bands to a gold clasp.

Gross weight approx. 57 gr.

L. approx. 18.5 cm

€ 600 - 800



50

An 18 carat gold and diamond bracelet*Circa 1970*The flexible bracelet centered by an entwined motif set with circular-cut coloured diamonds (colour not tested), signed *Bonebakker*.

Total diamond weight approx. 0.80 ct

Gross weight approx. 35.6 gr.

L. approx. 19 cm

Measured and weighed in the mount

€ 600 - 800



51

A 14 carat yellow and white gold diamond and sapphire bangle bracelet*20th century*

Alternately set with circular-cut diamonds and sapphires

Total diamond weight approx. 0.65 ct

Gross weight 15.2 gr.

Measured and weighed in the mount

€ 600 - 800



52

An 18 carat gold and blue enamel bracelet with locket pendant*20th century*

The flexible gold bracelet, comprising of rectangular blue enamel links, each with gold detail, with circular-shaped locket pendant and fitted case.

Gross weight approx. 33.3 gr. / Diam. approx. 5.3 cm

Provenance:

- Bodes & Bode, The Hague
- Private collection, the Netherlands

€ 600 - 1.000



53

An 18 carat gold, diamond, ruby and blue enamel snake bracelet

Circa 1890

The enamelled gold bracelet with four hinges, the head and tail rose-cut and old-cut diamond set, the eyes set with cabochon-cut ruby. Gross weight approx. 38.7 gr.

Provenance:

- Antiquair Verbeek-Schuttelaar, Gouda

- Private collection, the Netherlands

€ 2.500 - 3.500



54

An 18 carat rose gold and diamond Cartier-style bangle

21st century

The bracelet at intervals set with circular-cut diamonds, with screw driver.

Total diamond weight approx. 0.75 ct

Gross weight approx. 48.4 gr.

W. 7.5 cm

Measured and weighed in the mount

(2x)

€ 2.500 - 3.000



55

An 18 carat gold bracelet*Circa 1960*

The entwined and linked bracelet with maker's mark *TR* and numbered *T/18K0750/SP078*, in case signed *John van der Vet*.

Gross weight approx. 123.9 gr.

L. 20 cm

Provenance:

- John van der Vet, the Netherlands
- Private collection, the Netherlands

€ 4.000 - 5.000



56

A 14 carat gold bracelet*Late 20th century*

Designed as a wide linked band.

Gross weight approx. 82 gr.

L. approx. 19.5 cm

€ 4.000 - 5.000



57
A silver and amethyst Kenzo ring

Late 20th century

Centered by a cabochon-cut amethyst to plain silver mounts decorated with leaf motif, fitted signed pouch and case.

Gross weight approx. 32.6 gr.

Ring size 56/18

€ 600 - 800



58
A 14 carat white gold, tourmaline and diamond ring

Circa 1980

Centered by an oval-cut blue tourmaline, within diamond set foliate motif.

Total diamond weight approx. 0.18 ct

Tourmaline weight approx. 3.50 ct

Gross weight approx. 6.1 gr.

Ring size 56/17 1/3

Measured and weighed in the mount

€ 1.000 - 1.200



59
An 18 carat gold, silver, aquamarine and diamond ring

20th century

Centered by a faceted aquamarine, within openwork rose-cut and single-cut diamond set mount.

Aquamarine weight approx. 4.00 ct

Gross weight approx. 4.4 gr.

Ring size 50/16

Measured and weighed in the mount

€ 600 - 800



60
A diamond and opal ring

20th century

Centered by three graduating cabochon-cut opals within old-cut diamond mount.

Below legal Dutch platinum alloy

Total opal weight approx. 6.00 ct

Total diamond weight approx. 0.45 ct

Ring size 53/17

Measured and weighed in the mount

€ 800 - 1.200



61

A platinum, diamond and blue sapphire cluster ring

20th century

The ring centered by a cushion-cut sapphire within old-cut diamond border, the band with foliate-shaped diamond set motif, the mount openworked, accompanied by a GRS certificate stating that the sapphire is of natural blue colour, weighing 11,37 ct, originated Sri Lanka and has no indication of thermal heat treatment, numbered GRS2017-051553 and dated 11-5-2017. Total diamond weight approx. 0.96 ct

Gross weight approx. 8 gr. / Ring size 53/17

Diamonds measured and weighed in the mount

€ 20.000 - 25.000



62

A 14 carat white gold, diamond and ruby ring

Circa 1970

Set with circular- and carré-cut diamonds and oval- and pear-cut rubies.

Total ruby weight approx. 1.00 ct

Total diamond weight approx. 1.20 ct

Gross weight approx. 6.7 gr.

Ring size 59.5/19

€ 1.000 - 2.000



63

A 14 carat two coloured gold, jade and diamond ring

20th century

Centered by an oval-cut carved jade plaque, within foliate diamond mount, the band engraved 24-01-1922.

Jade spread approx. 18 x 13 mm

Total diamond weight approx. 0.70 ct

Gross weight approx. 9.8 gr.

Ring size 52/16 1/2

Measured and weighed in the mount

€ 1.200 - 1.500



64

An aquamarine and diamond cluster ring

Circa 1950

Centered by a step-cut aquamarine within circular-cut diamond mount, the band with diamond detail.

Below Dutch legal gold alloy

Aquamarine spread approx. 12.5 x 9.3 mm

Total diamond weight approx. 1.00 ct

Gross weight approx. 8.7 gr. / Ring size 60/19 1/4

Measured and weighed in the mount

€ 1.000 - 1.500



65

An 18 carat white gold and diamond eternity band

21st century

The flexible ring set with seventeen circular-cut diamonds.

Total diamond weight approx. 2.55 ct

Gross weight approx. 5.6 gr.

Ring size 54/17

Measured and weighed in the mount

€ 1.800 - 2.200



66

A 14 carat white gold, diamond and ruby cluster ring

Circa 1970

Centered by an oval-cut ruby (not tested), flanked by step- and circular-cut diamonds

Total ruby weight approx. 1.80 ct

Total diamond weight approx. 1.40 ct

Gross weight approx. 7.4 gr.

Ring size 59/19

Measured and weighed in the mount

€ 2.500 - 3.500



67

An 18 carat gold, platinum, diamond and sapphire bracelet
20th century

Designed as a flexible double row of circular-cut diamonds, alternated by a line of callibré-cut sapphires, the mounts engraved.

Total diamond weight approx. 5.00 ct

Total sapphire weight approx. 5.00 ct (not tested)

Gross weight approx. 32.8 gr. / L. approx. 18.7 cm

Measured and weighed in the mount

€ 4.000 - 6.000



68

An 18 carat white gold, ruby and diamond bracelet

Circa 1970

Designed as a double line of circular-cut diamonds, alternated by three graduating oval-cut rubies, to a flexible satined white band.

Total ruby weight approx. 1.75 ct

Total diamond weight approx. 0.75 ct

Gross weight approx. 21.6 gr. / L. approx. 18 cm

Measured and weighed in the mount

€ 600 - 800



69

A platinum and 14 carat white gold and diamond bangle

20th century

Centered by a flower head with old-cut diamond to a partly graduated old-cut diamond set band.

Central diamond approx. 1.50 ct, measuring approx. 7.41 x 4.38 mm / Central diamond colour, K/L, clarity Si

Diamonds total weight approx. 4.00 ct

Gross weight approx. 23.5 gr. / Diam. approx. 6 cm

Measured, graded and weighed in the mount

€ 2.500 - 3.500



70

A 14 carat gold, silver, diamond and pearl bracelet*20th century*

Designed as foliate-shaped links, old-cut diamond set, each centered by a pearl.

Diam. pearls approx. 4 mm

Gross weight approx. 31 gr.

L. approx. 18.5 cm

Measured and weighed in the mount

€ 2.000 - 3.000



71

An 18 carat white gold and diamond bracelet*21st century*

Centered by a line of circular-cut diamonds, to a flexible ball-shaped band.

Total diamond weight approx. 0.60 ct

Gross weight approx. 8 gr.

Diam. 6 cm

Measured and weighed in the mount

€ 800 - 1.000



72

An 18 carat white gold and diamond bangle*21st century*

Centered by a line of circular-cut diamonds, to a plain white gold band.

Total diamond weight 0.40 ct

Gross weight approx. 12 gr.

Diam. approx. 5.1 cm

Measured and weighed in the mount

€ 1.200 - 1.500



73

A 14 carat white gold and diamond ring*Circa 1970*

Centered by two larger circular-cut diamonds and various smaller circular-cut diamonds, the mount with single-cut diamond detail.

Total diamond weight approx. 1.00 ct

Gross weight approx. 4.3 gr.

Ring size 60/19

Measured and weighed in the mount

€ 600 - 800



74

A 14 carat white gold and diamond single stone ring*21st century*

Centered by a circular-cut diamond.

Diamond weight approx. 1.15 ct

Gross weight approx. 3.9 gr.

Ring size 55 1/2 / 17 3/4

Measured and weighed in the mount

€ 2.200 - 2.400



75

An 18 carat white gold and Asscher-cut diamond single stone ring*21st century*

In a plain mount.

Diamond weight approx. 1.06 ct

Gross weight approx. 2.2 gr.

Ring size 56/ 17 1/3

Measured and weighed in the mount

€ 1.600 - 2.000



76

An 18 carat white gold diamond ring*20th century*

Openwork foliate design, centered by a brilliant-cut diamond weighing approx. 0.40 ct.

Gross weight approx. 4.50 gr.

Measured and weighed in the mount

€ 650 - 750



77

A platinum and diamond ring

20th century

Centered by collet set old-cut diamond, within openworked old-cut diamond surround.

Central diamond weight approx. 2.00 ct

Colour ca. L/M, clarity ca. SI2-P1

Diamond surround approx. 0.40 ct

Gross weight approx. 4.7 gr. / Ring size 53/17

Measured, graded and weighed in the mount

€ 4.500 - 5.000



78

An 18 carat gold and steel Cartier 'Panthere' necklace

21st century

Designed as gold and steel links, the clasp signed *Cartier* and numbered *1003586*, with certificate numbered *N3022900/87186B* 18 december 2007.

Gross weight approx. 71 gr.

Inner size 12.5 cm

€ 3.500 - 4.500



79

An 18 carat gold and diamond eternity band ring*21st century*

Centered by a line of princess-cut diamonds, flanked by plain gold bands.

Total diamond weight approx. 0.90 ct

Gross weight approx. 8 gr.

Ring size 53/17

Measured and weighed in the mount

€ 1.200 - 1.400



80

An 18 carat gold and diamond ring*21st century*

Centered by a circular-cut diamond, to a tapering diamond set ribbed gold mount.

Central diamond weight approx. 0.25 ct

Colour ca. I-J, clarity ca. VS.

Total diamond weight approx. 0.70 ct

Gross weight approx. 4.5 gr. / Ring size 53/17

Measured, graded and weighed in the mount

€ 700 - 900



81

An 18 carat gold and diamond 'amore' band ring*Italy, circa 1990, Pascuale Bruni*The plain band centered by 'amore' alternated by a diamond-set heart-shaped motif, signed *Pascuale Bruni*.

Weight diamond approx. 0.12 ct

Gross weight approx. 10.7 gr.

Ring size 16 1/2 / 52

Measured and weighed in the mount

€ 600 - 800



82

An 18 carat gold and diamond band ring*20th century*

The entwined ring partly set with circular-cut diamonds.

Total diamond weight approx. 0.80 ct

Gross weight approx. 16 gr.

Ring size 55/17 1/2

€ 600 - 800



83

An 18 carat gold and diamond necklace

21st century

The yellow gold linked necklace alternated by three white gold and circular-cut diamond set links.

Total diamond weight approx. 2.40 ct

Gross weight approx. 72.9 gr.

L. 43 cm

Measured and weighed in the mount

€ 4.000 - 6.000



84

An 18 carat gold and sapphire ring*20th century*

Centered by a cabochon-cut blue sapphire, the band set with square-cut diamonds.

Gross weight 6.80 gr.

€ 600 - 800



85

An 18 carat gold and tourmaline ring*Circa 1980*

Centered by a rectangular-faceted green tourmaline in wide plain band.

Tourmaline spread approx. 15.8 x 6.4 mm

Gross weight approx. 7.6 gr.

Ring size 54/17 1/4

Measured and weighed in the mount

€ 700 - 900



86

A 14 carat gold and topaz ring*Circa 1970*

Set with an oval-cut gold topaz.

Topaz spread approx. 23 x 16 mm

Gross weight approx. 10 gr.

Ring size 51/16 1/4

Measured and weighed in the mount

€ 600 - 800



87

A pair of Cartier 'Trinity' hoop earrings*20th century*

Each designed as an intertwined tri-colour gold hoop, signed Cartier and numbered 750 / C4024.

Gross weight approx. 8.70 gr.

€ 800 - 1.200



88
Three 18 carat gold and diamond eternity bands
 21st century

Designed as a pink, respectively a yellow and a white gold band, each set with circular-cut diamonds.

Total diamond weight approx. 2.10 ct

Gross weight approx. 4.6 gr.

Ring size 54/17

Measured and weighed in the mount

€ 1.500 - 2.000



89
An 18 carat gold and diamond Chanel ring
 21st century

Designed as an entwined motif with circular-cut diamond detail. With maker's mark, French assay marks, signed *Chanel*, numbered 15F143.

Total diamond weight approx. 0.50 ct

Gross weight approx. 16.5 gr.

Ring size 53/17

Measured and weighed in the mount

€ 1.500 - 2.000



90
An 18 carat gold, diamond and emerald Bvlgari ring
 Circa 1980

Centered by an oval-shaped cabochon-cut emerald, at each side alternated with diamond detail to a partly ribbed band. With Italian essay marks, signed *Bvlgari*.

Emerald weight approx. 1.33 ct

Total diamond weight approx. 0.10 ct

Gross weight approx. 8.3 gr. / Ring size 51/16 1/4

Measured and weighed in the mount

€ 1.500 - 2.000



91
An 18 carat gold, diamond and emerald Cartier band ring
 20th century

Designed as a plain gold band, centered by a circular-cut diamond, alternated by a circular-cut emerald at each side. With French assay marks, signed *Cartier*, fitted case.

Total diamond weight approx. 0.20 ct

Colour ca. F/G, clarity ca. VVS/VS.

Gross weight approx. 7.5 gr. / Ring size 53/17

Measured, graded and weighed in the mount

€ 1.000 - 1.500



92

An 18 carat white and yellow gold Cartier necklace

20th century

Designed as an entwined linked necklace, signed *Cartier* and numbered 295694, in Cartier case.

Gross weight approx. 60.5 gr.

L. approx. 44 cm

W. approx. 1.1 cm

€ 3.500 - 4.500



93
A pair of 14 carat white gold and diamond ear pendants
 21st century
 Designed as a line of circular-cut diamonds.
 Total diamond weight approx. 1.20 ct
 Gross weight approx. 3.7 gr.
 L. approx. 3 cm
Measured and weighed in the mount
 (2x)
 € 1.200 - 1.500



94
A pair of 14 carat white gold, diamond and emerald ear pendants
 21st century
 Designed as a line of circular-cut diamonds alternated by circular-cut emeralds.
 Total diamond weight approx. 1.20 ct
 Gross weight approx. 4.8 gr. / L. approx. 2.8 cm
Measured and weighed in the mount
 (2x)
 € 1.500 - 2.000



95
A pair of 14 carat white gold, diamond and emerald ear clips
 20th century
 Each set with as a square-cut emerald, flanked by two square-cut diamonds, surmounted by foliate diamond set mount.
 Total diamond weight approx. 1.00 ct
 Total emerald weight approx. 1.00 ct
 Gross weight approx. 10.7 gr. / L. approx. 2.5 cm
Measured and weighed in the mount
 (2x)
 € 1.500 - 2.500



96
A pair of 14 carat white gold, diamond, emerald and Tahiti pearl ear pendants
 21st century
 Designed as a circular-cut diamond line, alternated by circular-cut emeralds, suspending a Tahiti pearl drop.
 Tahiti pearl spread approx. diam. 12 mm
 Total diamond weight approx. 0.80 ct
 Gross weight approx. 12.6 gr. / L. approx. 4.2 cm
Measured and weighed in the mount
 (2x)
 € 1.200 - 1.500



97

An 18 carat gold, diamond and aquamarine Sterlé pendant

Circa 1960's

Centered by an emerald-cut aquamarine, within openworked mount, with single-cut diamond detail, with foliate-shaped diamond set loop, the pendant signed *Sterlé Paris* and numbered *0966*. Total aquamarine weight approx. 15.00 ct

Total diamond weight approx. 0.35 ct / Gross weight approx. 10.3 cm

Measured and weighed in the mount

€ 5.000 - 6.000



98

A grey Tahiti pearl necklace with 14 carat gold and diamond clasp

21st century

The slightly graduating necklace comprising twenty-seven grey pearls, to a black rhodinated clasp, set with black diamonds (colour not tested).

Gross weight approx. 146 gr.

W. pearls approx. 15-16.75 mm / L. approx. 46 cm

Measured, graded and weighed in the mount

€ 4.000 - 4.500



99

A pair of 14 carat gold, red coral and diamond ear studs
20th century

Centered by a coral bead, surmounted by an old-cut diamond.

Total diamond weight approx. 0.15 ct

Gross weight approx. 6.2 gr.

Diam. 10.7 mm (coral)

Measured and weighed in the mount

€ 600 - 800



100

A pair of 14 carat white gold, fire opal and diamond earrings
20th century

The fire opals are set within a cluster of circular-cut diamonds.

Total diamond weight approx. 1.00 ct

Gross weight approx. 8.5 gr.

€ 1.400 - 1.500



101

A pair of 18 carat white gold, diamond and pearl ear pendants
21st century

Designed as a cultured pearl surmounted by an openworked

old-cut diamond set motif.

Pearl spread approx. diam. 8 mm

Gross weight approx. 7.3 gr. / L. approx. 5.2 cm

Measured and weighed in the mount

(2x)

€ 600 - 800



102

A pair of sterling silver and diamond ear pendants
21st century

The oval-shaped pendants, throughout diamond set.

Weight approx. 7.3 gr

L. approx. 4 cm

€ 600 - 800



103

A three strand gold, silver, diamond and natural pearl necklace with an exceptionally large blister pearl

Circa 1900

The graduating three-strand natural pearl necklace centered by a rose-cut diamond and blister pearl set tortoise, suspending a pear-shaped pearl, to an old-cut diamond clasp and rose-cut diamond mounts, including a NEL (Dutch Gemstone Lab) Leiden certificate stating that the pearls are natural and untreated, numbered *P5612*, the blister pearl not tested.

Total diamond weight approx. 0.60 ct (clasp)

Blister pearl spread approx. 15 x 12 mm (not tested)

Pear-shaped pearl L. approx. 8.7 mm

Pearls diam. approx. 2.5-5 cm

Gross weight approx. 31 gr.

L. approx. 36 cm

Measured, graded and weighed in the mount

€ 2.000 - 3.000



104

An opal and crystal necklace*20th century*

The graduating opal bead necklace, alternated by faceted rock crystal disks, to a platinum clasp with diamond detail.

Opal spread 3.3 mm - 6.8 mm

Gross weight approx. 10.8 gr.

L. approx. 42.5 cm

Measured and weighed in the mount

€ 800 - 1.200



105

A 14 carat gold, branch coral and pearl necklace*20th century*

The branch coral and gold coloured fresh water pearls alternately strung in between gold lock.

Gross weight approx. 68.5 gr.

L. approx. 48 cm

€ 600 - 800



106

A 14 carat gold choker*Circa 1980*

Designed as flexible links in Bvlgari Parentesi-style.

Gross weight approx. 82.2 gr.

L. 42.5 cm

€ 1.000 - 1.200



107

An 14 carat gold and garnet necklace*The Netherlands, early 20th century*

Designed as oval-cut garnets in filigree mount.

Gross weight approx. 21 gr.

L. approx. 40.5 cm

€ 600 - 800



108

An 18 carat white gold and diamond spectacle necklace

21st century

Collet set with circular-cut diamonds, alternated by smaller circular-cut diamonds.

Diamonds approx. 12.00 ct

Gross weight approx. 22.6 gr.

L. approx. 145 cm

Measured and weighed in the mount

€ 6.200 - 6.500



109
An Art Deco-style 14 carat white gold diamond and onyx pendant and necklet

20th century

Centered by a line of ascending circular-cut diamonds.

L. approx. 45 cm

Gross weight approx. 5.3 gr.

€ 600 - 800



110
An Art Deco-style 14 carat white gold diamond and onyx pendant

20th century

Cluster of circular-cut diamonds set within an oval-shaped onyx, suspended on a diamond pendant.

Total diamond weight approx. 0.50 ct

Total weight 8.70 gr.

Measured and weighed in the mount

€ 600 - 800



111
An 18 carat white gold and diamond pendant

21st century

Designed as a circular-cut diamond, surmounted by a collet-set diamond.

Total diamond weight approx. 0.50 ct

Gross weight approx. 1.1 gr.

L. approx. 1.8 cm

Measured and weighed in the mount

€ 600 - 800



112
A 14 carat gold, Art Deco seed pearl, diamond, jade and enamel necklace

Circa 1925

The entwined seed pearl necklace with diamond detail, suspending a rectangular-shaped carved jade, surmounted by a foliate single-cut diamond set and black enamel mount.

Total diamond weight approx. 0.30 ct

Gross weight approx. 21 gr. / L. approx. 32 cm (necklace)

L. approx. 6 cm (pendant)

Measured and weighed in the mount

€ 1.500 - 2.500



113
A platinum and diamond spray brooch

Circa 1960

Designed as spray surrounded by foliage, throughout circular- and single-cut diamonds.

Total diamond weight approx. 2.00 ct

Gross weight approx. 18 gr.

L. approx. 6 cm

Measured and weighed in the mount

€ 1.200 - 1.500



114
A 14 carat white gold, diamond and ruby spray brooch

Circa 1980

Designed with circular-cut diamonds and navette-cut rubies.

Total ruby weight approx. 1.50 ct

Total diamond weight approx. 1.50 ct

Gross weight approx. 9.7 gr.

L. approx. 5.5 cm

Measured and weighed in the mount

€ 1.000 - 1.200



115
A 14 carat gold, silver and diamond flower brooch

The Netherlands, circa 1900

Shaped as a spray of flowers, centered by a flower head throughout set with rose-cut diamonds.

Gross weight approx. 21 gr.

L. approx. 7 cm

€ 1.000 - 1.500



116
An 18 carat gold and multi gem flower brooch

Circa 1960

Shaped as a bunch of flowers and set with agate, citrine, amethyst and garnet flower heads.

Gross weight approx. 14 gr.

L. approx. 4.2 cm

€ 600 - 800



117
An 18 carat gold, emerald and diamond pendant
20th century
 Centered by a pear-shaped emerald within single-cut diamond surround, accompanied by a GIA certificate stating the emerald is natural, 7.80 ct, is clarity enhanced, numbered 2236780174 and dated 12-7-2016.
 Gross weight approx. 6.2 gr.
 L. approx. 2.8 cm
Diamond measured and weighed in the mount
 € 700 - 900



118
A 14 carat gold, opal and pearl pendant and a 14 carat gold and opal pendant
20th century
 Each set with a drop-shaped opal, one within gold and pearl set border.
 Gross weight approx. 22 gr.
 L. approx. 5.2 / 5 cm
 (2x)
 € 600 - 800



119
A 14 carat gold and garnet pendant
Circa 1890
 Cross-shaped and throughout set with faceted garnets.
 Gross weight approx. 12.8 gr.
 L. approx. 6 cm
 Provenance:
 - Bodes & Bode, The Hague
 - Private collection, the Netherlands
 € 600 - 800



120
A 14 carat gold, amethyst and prasiolite brooch
Late 19th century
 Centered by an oval-cut amethyst surrounded by faceted prasiolite.
 Amethyst spread approx. 19 x 15 mm
 L. approx. 4 cm
 Gross weight approx. 14 gr.
Measured and weighed in the mount
 € 600 - 800



121

An 18 carat gold, diamond, emerald and enamel Van Cleef & Arpels novelty brooch

Circa 1960

Designed as seated lion with single-cut diamond and emerald detail, the nose enamelled, signed VCA and numbered 75063/B10231131.

Total emerald weight approx. 0.05 ct

Total diamond weight approx. 0.30 ct / Gross weight approx. 13 gr.

L. approx. 3.5 cm

€ 2.500 - 3.500



122
An 18 carat gold, diamond and emerald Hermès novelty brooch

Circa 1960

Designed as a deer, with single- and circular-cut diamond and emerald detail, numbered 46066, signed *Hermès Paris*.

Total emerald weight approx. 0.10 ct

Total diamond weight approx. 0.20 ct

Gross weight approx. 16.2 gr. / L. approx. 4.8 cm

Measured and weighed in the mount

€ 1.500 - 2.500



123
An 18 carat gold and emerald Hermès novelty brooch

Circa 1970

Realistically designed as a tjilping bird, the eye emerald set. Signed *Hermès Paris déposé*.

Emerald weight approx. 0.05 ct

Gross weight approx. 10 gr.

L. approx. 3.5 cm

Measured and weighed in the mount

€ 1.200 - 1.500



124
An 18 carat white gold, diamond and enamel novelty brooch

20th century

Realistically designed as a duck, the body pavé single-cut diamond set, with blue-green enamelled head, numbered Z7861100.

Total diamond weight approx. 1.00 ct

Gross weight approx. 12.1 gr. / L. approx. 4.2 cm

Measured and weighed in the mount

€ 1.500 - 2.500



125
An Art Deco gold, silver and ruby vanity case

Circa 1930

The engine turned silver compact, with gold lit, cut and engraved with flowers and butterflies, with ruby detail, holding a mirror, with French assay marks and makers marks.

Gross weight approx. 184 gr.

L. approx. 8.5 gram

€ 600 - 800



126
An 18 carat gold and agate cameo brooch/pendant
Second half 19th century
 The oval-shaped cameo carved with a classical ladies portrait *en profil*, in gold mount.
 Gross weight approx. 33 gr.
 L. approx. 4.6 cm
 Provenance:
 - Bodes & Bode, The Hague
 - Private collection, the Netherlands
 € 600 - 800



127
A 14 carat gold and agate cameo and pearl brooch/pendant
Second half 19th century
 The oval-shaped cameo carved with a ladies portrait *en profil*, in gold and pearl set mount.
 Gross weight approx. 19 gr. / L. approx. 4.6 cm
 Provenance:
 - Bodes & Bode, The Hague
 - Private collection, the Netherlands
 € 600 - 800



128
A fine 14 carat gold, silver and agate cameo brooch/pendant
Second half 19th century
 The oval-shaped cameo carved with a classical ladies portrait *en profil*, in two-coloured gold mount cast with foliage and surmounted by a bow.
 Gross weight approx. 47.2 gr.
 L. approx. 6 cm
 € 800 - 1.200



129
A rare 14 carat gold and agate cameo brooch/locket with hairwork
Second half 19th century
 The oval-shaped cameo carved with a classical male portrait *en profil*, in gold mount, the reverse with glass mount containing tuft of hair, monogrammed *ELH*.
 Gross weight approx. 40.1 gr.
 L. approx. 5 cm
 € 700 - 900



130

An 18 carat gold and diamond necklace and ring

Circa 1950

Designed as a double linked yellow and white gold necklace with circular-cut diamond detail, ending in an asymmetrical circular-cut diamond set leaf motif, with matching ring.

Total diamond weight approx. 1.60 ct

Colour ca. I/J, clarity ca. VS2-SI2

Gross weight approx. 87.6 gr. / Ring size 59/19

Measured, graded and weighed in the mount

(2x)

€ 3.000 - 5.000



131
A 14 carat gold filigree brooch/pendant
The Netherlands, 20th century
 Of circular form and openwork design.
 Gross weight approx. 31 gr.
 Diam. approx. 6 cm
 € 600 - 800



132
A pair of 18 carat gold and carved stone earrings
Central America, 21st century
 The earclips and black carved stone, themed in native American style.
 Gross weight approx. 40.3 gr.
 (2x)
 € 600 - 800



133
A pair of 18 carat white gold diamond ribbon earrings
20th century
 Each designed as a double ribbon set with circular-cut diamonds.
 Gross weight approx. 10.9 gr.
 L. approx. 3 cm
 € 900 - 1.300



134
A pair of 18 carat white gold 'happy diamonds' Chopard earrings
1970's
 Of square design, centered by three enclosed happy diamonds, signed *Chopard* and numbered 2292660, 84/3880.
 Gross weight approx. 28.0 gr.
 € 1.500 - 2.500



135

An 18 carat yellow gold Pomellato necklace and bracelet

20th century

Designed as an intertwined linked bracelet and necklace,
signed *Pomellato*.

Gross weight approx. 280 gr.

L. approx. 53 cm (necklace)

L. approx. 22.5 cm (bracelet)

€ 9.500 - 10.000



136
An Art Deco 14 white gold and diamond bracelet and an 18 carat white gold diamond and pearl Art Deco brooch

The Netherlands, circa 1920

The bracelet designed as a graduating line of old-cut diamonds to a linked band, the brooch centered by a pearl (not tested).

Total diamond weight approx. 1.70 ct

Gross weight approx. 17.6 gr. / L. approx. 19 cm (bracelet)

L. approx. 6.5 cm (brooch)

Measured and weighed in the mount

(2x)

€ 600 - 1.000



137
A 14 carat gold, metal and pearl brooch, an Art Nouveau 14 carat gold, red stone and pearl brooch and a 18 carat gold diamond and pearl brooch *Circa 1900*

The heart-shaped brooch/pendant set with pearls and seed pearls; the Art Nouveau brooch set with red stones and pearls in foliate design; and the diamond and pearl brooch set with three old-cut diamonds and two pearls.

Gross weight approx. 12.7 gr. / L. approx. 2 / 3.5 / 7 cm

(3x)

€ 700 - 900



138
An 18 carat gold and diamond necklace and ring, and an 18 carat two-colour gold and diamond bracelet *Circa 1990*

The necklace centered by a collet set circular-cut diamond and matching ring; the two-colour gold linked bracelet alternated by five collet set circular-cut diamonds.

Total diamond weight approx. 0.60 ct / Gross weight approx. 35.5 gr. / L. approx. 37 cm (necklace) / L. approx. 19 cm (bracelet) / Ring size 52/16 1/2

Measured and weighed in the mount

(3x)

€ 600 - 800



139
A platinum, diamond, ruby, sapphire and emerald bracelet *20th century*

The linked bracelet alternated by two old-cut diamonds, an emerald, a ruby and a sapphire, with extra link set with a turquoise.

Total diamond weight approx. 0.35 ct

Ruby, sapphire, emerald each approx. 0.20 ct

Gross weight approx. 11.6 gm

L. approx. 11.6 cm

Measured and weighed in the mount

€ 1.000 - 1.200



140

A 14 carat gold, silver and diamond tiara*The Netherlands, circa 1880*

Centered by an asymmetrical spray of flowers and foliage set with rose-cut diamonds, bordered by a line of rose-cut diamonds, to a gilt frame, with brooch fitting and fitting for ear pendants.

Spread pear-shaped diamond approx. 9 x 7.2 mm

Spread pear-shaped diamond approx. 8.8 x 7.4 mm

Spread oval-shaped diamond approx. 7.1 x 5.1 mm

Spread oval-shaped diamond approx. 5.4 x 4.4 mm

Gross weight approx. 46 gr.

L. approx. 14 x W. approx. 4-1.5 cm (diamond motif)

Measured and weighed in the mount

Provenance:

Private collection, the Netherlands

€ 2.000 - 3.000



141

A diamond brooch*Early 20th century*

Designed as a graduating line of old-cut diamonds to a diamond set openworked mount.

Below Dutch legal gold alloy

Total diamond weight approx. 0.80 ct

L. 5.9 cm

Measured and weighed in the mount

€ 600 - 800



142

A diamond and demantoid brooch*Circa 1915*

Centered by a circular-cut demantoid, flanked by a line of old-cut diamonds.

Below Dutch legal gold alloy

Demantoid weight approx. 0.20 ct

Total diamond weight approx. 0.25 ct

Gross weight approx. 3.3 gr. / L. approx. 5.5 cm

Measured and weighed in the mount

€ 600 - 800



143

A multi strand bead necklace*20th century, possibly Art Deco*

Designed as a eight strand necklace, alternated by rectangular links, with multiple tassels.

L. approx. 48 cm

€ 600 - 800



144

An 14 carat gold, silver and diamond ladies pendant watch*Circa 1900*

The case rose-cut diamond set, surmounted by a rose-cut diamond set bow, cylinder movement.

Diam. approx. 2 cm (case)

L. approx. 5 cm

€ 800 - 1.200



145
A pair of 18 carat gold and onyx double Van Cleef & Arpels cuff links
20th century
 Each designed as two batons in gold mount, signed *Van Cleef & Arpels* and numbered *128604*, in fitted case.
 Gross weight approx. 8.5 gr.
 L. 2 cm
 € 1.500 - 2.000



146
A pair of 18 carat gold chalcedony double cuff links
21st century
 The double cuff links set with cabochon-cut pale green chalcedony.
 Gross weight approx. 9.5 gr.
 L. approx. 3 cm
 € 600 - 800



147
A collection of twenty-eight ten guilder gold coins
Dated 1875 - 1933
 Depicting king Willem III and queen Wilhelmina.
 Gross weight approx. 189 gr.
 (28x)
 € 4.000 - 6.000



148
A collection of seventeen Swiss twenty francs gold coins and nine gold Dutch ducats
Dated 1930 - 1947 and 1975
 The Swiss coins depicting Helvetia, the ducats depicting a knight.
 Gross weight approx. 148 gr.
 (18x)
 € 2.000 - 3.000



149

An 18 carat gold Omega ladies wristwatch

Circa 1960

The circular-shaped dial, winding movement to an integrated satined gold band, signed *Omega*.

Gross weight approx. 30.5 gr.

L. approx. 17 cm

Measured and weighed in the mount

€ 600 - 800



151

A 14 carat gold Omega ladies wristwatch

Circa 1950

The oblong-shaped dial with baton numerals, hand winding movement, to an integrated linked gold band, the dial signed *Omega*.

Gross weight approx. 30.8 gr.

Diam. approx. 8.5 cm

€ 600 - 800



150

An 18 carat gold Baume & Mercier ladies Linea wristwatch

20th century

Mother-of-pearl circular-shaped dial with Arabic numerals, quartz movement, to an integrated gold linked band and clasp, the case signed *Baume & Mercier* and numbered 4024141/MVO45201.

Gross weight approx. 54.4 gr.

Diam. 6.8 cm

€ 600 - 800



152

A silver verge watch*Thomas Lowe, Dartford, early 19th century*

The gilt verge movement cut with foliate motifs, signed *Tho Lowe* and numbered 1172, the plain case marked *London*, in plain silver protection case, with linked chain and key.

Diam. 5.5 cm

L. approx. 24.5 cm (chain)

€ 600 - 800



153

A 18 carat gold savonet pocket watch*Circa 1895*

In double gold case, engraved with monogram, the circular wide enamelled dial with Roman numerals, minute repeater, lever movement with cut and compensated bi-metallic balance, polished and tempered steel parts, thirty-two rubies, manual wind, chronograph, day, date, month and year, perpetual calendar, leap year and moon phases, the engraved case, numbered 6632 *répétition à minute - chronograph triple quantièmes 8c phases lunaire*.

Diam. approx. 5.8 cm / Gross weight approx. 141.8 gr.

€ 2.000 - 3.000



154

An 18 carat white gold and diamond Cartier Tank Divan wristwatch*20th century*

The rectangular case, to a black croco strap and white gold buckle signed *Cartier*, with Roman numerals, quartz movement and water resistant, the dial, signed *Cartier*, bordered by two lines of circular-cut diamonds, the bezel diamond set, case numbered 997391CD/2614, with fitted case and certificate.

Total diamond weight approx. 2.40 ct / L. approx. 22 cm

Measured and weighed in the mount

€ 10.000 - 14.000



155

An ormolu and patinated-bronze portico pendulum clock
France, second half 19th century

The architrave with gilt bronze ornamental bands supported by four fluted columns with Ionic capitals, resting on a rectangular bronze base with gilt flowering foliate bands and resting on four gilt bun feet, large white-enamelled convex dial with Roman numerals, sun-shaped pendulum and strike on a single bell.

H. 41.6 cm
 € 600 - 800



156

A large bracket clock

Late 19th century/early 20th century

In ebony veneered case surmounted by gilt bronze vase-shaped finials and swing handle, the gilt dial embellished with foliage and a silvered cypher ring with blackened Roman numerals, strike on circular rod gongs, a Westminster melody, the backplate stamped 981 and LFS. H. 52.5 cm

Provenance:

Collection H.J. van Dam, Amsterdam
 € 600 - 1.000



157

An Austrian painted and giltwood portico clock
Herzogenburg, circa 1830, Karl Herzog

The stepped wood base on four ivory coloured bun feet, the arch with four columns and four female and male supporting stems, the circular clock with white enamelled glazed dial, signed *Karl Herzog in Herzogenburg*, and Arabic numerals and surmounted by a horn blowing cupid seated in a star-studded arched niche with blue and gilt drapery with tassels, brass openwork pendulum, strike. H. 44.5 cm

€ 600 - 800



158

A late Empire column clock

France, 1815-1825, G. Vincent

With a profiled mahogany cornice and plain architrave supported by four columns with gilt bronze capital and base flanking the dial face with palmette border, white enamelled cypher ring with black Roman numerals, signed *G. Vincent*, strike on a bell.

H. 55.3 cm
 € 600 - 1.000



159

A large English bracket clock

London, mid 18th century, Thomas Hunter

In ebonized case surmounted by five gilt bronze bud finials, the arched dial behind a glass panelled door flanked by two gilt bronze caryatid flowering garlands, applied silvered chapter ring, Roman and Arabic numerals, gilt matted centre and apertures for the mock pendulum and date, the arch signed *Tho. Hunter, London* and with two subdials for the quarter chime selection, eight day going train with verge escapement and short pendulum, the two spring barrels with fusees, with a strike for the hours on a single bell and a melody on chimes, back plate elaborately engraved with foliate scrolls and stamped: *A.W. Kramme, Hamburg*.

H. 59.6 cm

€ 2.000 - 4.000



160
A Dutch burr-walnut longcase clock

First half 18th century

The hood with broken pediment and later turned finial, pierced architrave and sides, the glazed door flanked by two fluted pilasters, the case partly oyster veneered, the brass dial with cast corner spandrels, silvered cypher ring with blackened Roman numerals, signed *A. Oldenzijl Haarlem*, a subsidiary dial with seconds indication, aperture for day, date and month and a matted centre, the movement with eight day going train, lever escapement, with full and half hour strike on two chimes.

H. 234.2 cm
 € 600 - 1.000



161
A Dutch burr-walnut longcase clock

Amsterdam, mid 18th century, Andries Feenstra

The hood with a carved serpentine crest, pierced architrave, the glazed door flanked by two pilasters, the brass dial with silvered cypher ring, blackened Roman numerals, signed *Andries Feenstra, Amsterdam*, a subsidiary dial with seconds indication, two apertures for day, date and month and a matted centre, below an aperture for moon indication, the dial above a painted landscape, the case with burr walnut veneer and rocaille cartouche, the movement with eight day going train, anchor escapement and strike on two chimes.

H. 278 cm
 € 2.000 - 3.000



162
An Empire ormolu mantle clock
France, circa 1810

The rectangular base with applied stylized foliage centered by a flaming urn, on four tapering feet, surmounted by a seated embroidering lady in a fine Empire chair, enamelled dial with Roman numerals and a silvered bell strike.

H. 31.3 cm
 € 600 - 1.000



163
An Empire ormolu mantle clock
France, circa 1810

Surmounted by a seated lady holding a flower, flanked by a lyre and vase-shaped ewer, on rectangular base with applied palmette mounts centered by medallion depicting Amor, the later dial, signed *Deplagny à Avignon*, with Roman numerals, strike on a silvered bell.

H. 33.4 cm
 € 600 - 1.000



164
A Louis-Philippe ormolu mantel clock
France, circa 1830-1840

Surmounted by a floral lyre flanked by an allegorical female figure holding a club and a snake girdled mirror, and a trophy with flaming torch, all-seeing eye and floral wreath, gilt dial with blackened Roman numerals on a cypher ring with steel moon hands, surrounding a foliate medallion encompassed by an ornamental wreath, the backplate stamped 1043 and strike on a metal bell. H. 31.1 cm

€ 600 - 1.000



165
A Charles X pendulum clock
France, circa 1830

Surmounted by a putto on a carriage drawn by a dog, the dial with blackened Roman numerals, backplate stamped *B.B. Breveté, Paris*, resting on four feet and a *breche violette* marble base.

H. 23.1 cm
 € 600 - 1.000



166

An important Empire mantel clock 'The Astronomy Lesson'
France, circa 1810

After a design Jean-André Reiche (1752-1817), bronzes attributed to Claude Galle (1758 - 1815) depicting a governess and her pupil sitting at a table with an astrolabe, both sitting on fine Empire chairs, elaborately decorated with applied mounts, fine white enamel convex dial with hands, original hands included, black Roman numerals, signed *Paris*. With eight day going train, countwheel strike on full- and half hours on a single bell, timekeeping regulated with silk suspended pendulum.

H. 35.7 x W. 38.2 x D. 12.4 cm

Literature:

- H. Ottomeyer, P. Pröschel, *Vergoldete Bronzen, Die Bronzearbeiten des Spätbarock und Klassizismus*, 2 Vol., München, Klinkhardt und Biermann, 1986, p. 375.

- Kjellberg Pierre, *Encyclopedie de la Pendule Francaise, Du Moyen Age Au XXe Siecle*, Paris, Les Editions De L'Amateur, Paris, 1997, p. 398.

- Elke Niehüser, *Die französische Bronzeuhr: eine Typologie der figürlichen Darstellungen von Göttern, Helden, edlen Wilden*, München, Callwey, 1997, p. 220.

€ 2.000 - 3.000



167
An ornolu and patinated-bronze Charles X mantle clock
France, circa 1820-1830

Surmounted by a finely sculpted figure of a putto holding a Greek helmet and sword, on rectangular gilt base embellished with laurel wreath-shaped mount adorned with ribbons and a bundle of arrows and resting on scroll feet, slight convex gilt dial, the cypher ring with blackened Roman numerals, the mechanism with eight day going train, countwheel strike on a single bell.

H. 29.9 x W. 24.9 x D. 9.8 cm

Provenance:

Collection H.J. van Dam, Amsterdam

€ 600 - 1.000



168
A gilt-bronze Empire mantle pendulum clock
France, circa 1810

The case, mounted with Psyche looking towards her table mirror crowned with a figure of her lover Cupid surrounded by a laurel wreath and sitting on an Empire stool, on base with applied mounts shaped as Atlant figures and foliate scrolls with garlands and butterflies in between. With white enamel convex dial with original steel moon hands, eight day going train, countwheel strike on a single bell, timekeeping regulated with silk suspended pendulum.

H. 44.5 x W. 33.2 x D. 13.4 cm

Provenance:

Collection H.J. van Dam, Amsterdam

€ 600 - 1.000



169

A fine French ormolu Empire mantel clock

Paris, 1800-1815

Finely cast and chiselled case, surmounted by the group of Venus and Amor, flanked by doves hovering over clouds and a beehive with patinated bees, a mount in the shape of two entwined winged female demi-figures below the dial, the rectangular base set with a relief of a winged putto in a landscape with beehives, flanked by rose mounts, on claw and ball feet, the enamel dial with Roman numerals, signed *Lesieur à Paris*, silk suspension bell, strike, anchor movement with flat-bottomed backplate signed *Lesieur*. H. 43 cm

Provenance:

- Auction Sotheby's, Amsterdam, 21 February 1995, lot 459
- Corporate collection, the Netherlands
- Private collection, the Netherlands

Note:

Several clockmakers named Lesieur are recorded working in Paris in the early 19th century.

Depicted is Cupid complaining to his mother, Venus, that he is stung by a bee, to which she responds that his wound is nothing to that which he can cause with his arrows.

€ 1.500 - 2.500



170

A pair of French Chinoiserie ormolu candlesticks

Circa 1800 and later

Each on a square base, with circular white marble column, supporting a Chinese figurine stem, each holding an umbrella with suspending bells alternated by acorns, surmounted by a later candle holder. H. 32.5 cm

Provenance:

Private collection, the Netherlands

(2x)

€ 800 - 1.200



171
A pair of French Rococo-style gilt-bronze candlesticks
Second half 19th century
 With scrolling floral and butterfly motif on a shaped circular base, with removable drip pan.
 H. 24.5 cm
 Provenance:
 Private collection, the Netherlands
 (2x)
 € 600 - 1.000



172
A pair of Napoleon III gilt bronze four-light candelabra
Circa 1870
 Each on shaped circular base, with openwork baluster stem with screw-on top, the foliate scroll branches with screw-on socket and floral drip pan.
 H. 55 cm
 Provenance:
 Private collection, the Netherlands
 (2x)
 € 600 - 1.000



173
A pair of early French Charles X ormolu three-light candelabra
Circa 1820
 On square foot, conforming amorini stems supporting a three-light top, centered by a flaming torch, screw-on sockets and detachable drip pans. H. 52 cm
 Provenance:
 Private collection, the Netherlands
 (2x)
 € 800 - 1.200



174
A Rococo-style gilt-bronze six-light chandelier
20th century
 With a central foliate stem supporting five scrolled candle arms terminating in flowerheads. Not electrified.
 H 36.5 cm
 Provenance:
 Private collection, the Netherlands
 € 600 - 1.000



175

A pair of German Rococo polychrome giltwood winged angel candles

Circa 1770

Each supporting a pricket candle holder in opposing arms, a sash floating around the loins. H. 33 cm

Provenance:

- Auction Christie's, Amsterdam, 23 June 1994, lot 117

- Collection F. van Oppenraaij, Noordwolde

(2x)

€ 1.000 - 2.000



176

A pair of large French Empire ormolu and patinated-bronze five-light candelabra

Circa 1815

Each on rectangular gilt bronze foot, supporting a square green marble base with applied gilt bronze allegorical figure alternated by laurel, with patinated-bronze winged bare-breasted female caryatid raising the five-light top with central stem with flaming torch, detachable drip pans. H. 70 cm

Provenance:

Collection F. van Oppenraaij, Noordwolde

(2x)

€ 1.500 - 2.500



177
A pair of French Charles X ormolu and patinated-bronze three-light appliques

Circa 1830

Each modelled as a putto reaching from a circular base, holding the three-light candle holder, with removable drip pans.

H. 28 cm

Provenance:

Collection F. van Oppenraaij, Noordwolde

(2x)

€ 600 - 800



178
A pair of early French Charles X ormolu and patinated-bronze candlesticks

Circa 1820

On triangular base with three lion paws, with fluted stem and screw-on drip pan and socket.

H. 27 cm

Provenance:

Private collection, the Netherlands

(2x)

€ 600 - 1.000



179
A pair of French ormolu and patinated-bronze Charles X three-light candelabra

Circa 1830

Each on triangular base, with a plain column, supporting three lights with a central flaming torch, with lampshade, later fitted for electricity.

H. 94.3 cm

(2x)

€ 800 - 1.200



180
A pair of French Charles X ormolu and patinated-bronze three-light candelabra

Circa 1830

Each opposite, on plain rectangular base, with circular palmette motif supporting a gilt- and patinated-bronze baluster with Amor balancing on a ball holding the four-light candle, detachable drip pans. H. 48.5 cm

Provenance:

Collection F. van Oppenraaij, Noordwolde

(2x)

€ 800 - 1.200



181
A French Louis XIV-style gilt-bronze chandelier

Late 19th century

The three sided centre section with acanthus leaves, Bourbon family crests, Ionic capitals, laurel festoons, a tapering stem, strongly scrolled arm supports, an acanthus and pomegranate finial.

H. 65.9 cm

€ 800 - 1.200



182
A Dutch brass six-light chandelier

17th century and later

With ring suspension, a ball and multi baluster shaft and scrolled branches, turned nozzles and disc drip pans.

H. 39.4 cm

€ 1.200 - 1.800



183
A Dutch brass twelve-light chandelier

18th/19th century

With a ball and baluster stem and two tiers of scrolled branches, turned and rimmed nozzles and disc drip pans.

H. 62.4 cm

€ 800 - 1.200



184
A Dutch brass six-light chandelier

19th century

The baluster shaft issuing scrolling branches with broad drip pans and turned nozzles.

H. 45 cm

Provenance:

Collection H.J. van Dam, Amsterdam

€ 600 - 800



185

A Dutch brass twelve-light chandelier

19th century

With a ball and multi baluster stem and two tiers of scrolled branches, turned and rimmed nozzles and disc drip pans.

H. 57.5 cm

Provenance:

Collection H.J. van Dam, Amsterdam

€ 600 - 800



186
A French brass candlestick

16th century

With a rimmed and pierced tapering socket, a knobbed and baluster shaped stem and mounted on a dished base.

H. 21.8 cm

€ 800 - 1.200



187
A Dutch brass candlestick

16th century

With a rimmed and pierced tapering socket, a knobbed and baluster shaped stem and mounted on a high dished base.

H. 20.7 cm

Note:

This item was excavated in the 20th century.

€ 800 - 1.200



188
A Dutch brass candlestick

16th century

With a rimmed and pierced tapering socket, a knobbed and baluster shaped stem and mounted on a high dished base.

H. 17.2 cm

Note:

This item was excavated in the 20th century.

€ 800 - 1.200



189
A German brass candlestick

Neurenberg, circa 1600

With an engraved rimmed socket, a knobbed stem and a bell-shaped base with shallow drip pan.

H. 14.3 cm

€ 600 - 800



190

A Dutch brass candlestick

16th century

With a rimmed and pierced nozzle, a disc knobbed stem and a large stepped bell-shaped base with an extended drip pan.

H. 27.5 cm

Diam. 13.2 cm

€ 3.000 - 5.000



191

An exceptional Flemish brass 'epiphany' candlestick

15th century

With two candle holders mounted on a pointed stem with a screw line on the stem and a large stepped bell-shaped base with an extended drip pan.

H. 38.3 cm

Diam. 13.2 cm

€ 4.000 - 6.000



192

A Dutch brass pricket candlestick*16th century*

High domed base with baluster stem and drip pan, on three spreading baluster feet.

H. 22.7 cm

€ 600 - 800



193

An Italian chased patinated-brass lantern*18th century*

The hexagonal one-light glazed lantern, six frames and five glass panels, and with a hinged glass panel door, between gadrooned baluster top and bottom, each with hinged ring.

H. 70.9 cm

€ 600 - 800



194

A pair of ormolu mounted marble vases*Late 19th century*

Each of *breche violette* marble, surmounted by a bud finial, applied with festoons suspended from a satyr's head at each side, with a band of playing cupids, on square foot.

H. 52 cm

(2x)

€ 600 - 800



195

A pair of ormolu mounted marble vases with lids*Late 19th century*

Each of *breche violette* marble, with detachable lid surmounted by a foliate and flaming finial, applied with festoons suspended from a handle at each side, on a square foot.

H. 52 cm

Provenance:

Collection H.J. van Dam, Amsterdam

(2x)

€ 600 - 800



196

A giltwood Louis XVI-style mirror*Late 19th century*

A carved central vase crest with flower bouquet, palm branches and a bow, the chamfered mirror glass surrounded by a beaded band and carved laurel leaves.

H. 179.5 x 91 cm

Provenance:

Collection F. van Oppenraaij, Noordwolde

€ 600 - 800



197

A mahogany Empire-style mirror*Circa 1900*

Under the cornice an architrave with two corner rosettes and a central diamond mount, vertical bronze laurel branches and rectangular chamfered mirror glass.

H. 193 x W. 103.5 cm

€ 600 - 800



198

A Louis XVI giltwood mirror*France, circa 1790*

A rectangular fluted frame with corner rosettes.

H. 167.2 x W. 83.6 cm

€ 1.000 - 2.000



199

A giltwood pier mirror*Circa 1870*

Crowned with a central scroll crest with a flowering garland and oak branches, the rectangular frame with carved laurel bands, graduating in depth from the top down.

H. 72 x W. 53 cm

€ 600 - 800



200

An elegant Italian Rococo giltwood mirror

Circa 1760

With finely carved scrolling motif with rocaille and floral swirls with wheat sheaves, the mirror between two shaped horizontal smaller mirrors.

H. 119 cm

Provenance:

Private collection, the Netherlands

€ 1.000 - 2.000



201

A Dutch polychromed pinewood corner cabinet

Circa 1800

The top section with two corner shelves above a cabinet with two doors, the front polychrome painted with the presentation of the head of Saint John to Salome. H. 133.2 x W. 35.8 x D. 35.4 cm

Note:

According to the bible, king Herod was so taken by Salome's dancing performance that he promised her anything she wanted. Influenced by her mother, Salome asked for the head of Saint John the Baptist.
€ 500 - 800



202

An exceptionally fine Louis XVI 'secrétaire à abbatant' by François Rübestück (circa 1722 - 1785, master 1766)

Paris, circa 1770/75

Stamped *F. RUBESTUCK*, with a shaped white marble top above a drawer with inlay of a string of rosettes in connected circles, ormolu corner ornaments with laurel festoons, the exterior of the writing surface with marquetry basket of flowers and fillets, counter balance, the inside lined with gold-pressed green leather, fitted interior with three compartments above a small compartment flanked by three marquetry drawers on each side, the lower section with two doors, bouquets of flowers and an ormolu mounted apron, the sides with matching marquetry inlay, the veneer in tulipwood, rosewood, sycamore maple and various precious woods.

H. 133.9 x W. 78.8 x D. 38.6 cm

Provenance:

- Mr. & Mrs Maurice Frank Glanville, England
- Private collection, the Netherlands

Literature:

- P. Kjellberg, *Le mobilier français du XVIIIe siècle*, Paris, 1989, p. 744 (biogr. information)
- J. Nicolay, *L'art et la manière des maîtres ébénistes français au XVIIIe siècle*, Vol. I, Paris, 1976, p. 414f. (biogr. information)

Note:

Restored by Italian furniture maker, Stefano Blantelli, commissioned by Moinat antiques dealers, Route de Genève 20, Rolle, Switzerland (written in pencil on the reverse of one drawer).

According to B. Pallot: "The primary reason for the stamp arose from the desire of the Community of Joiners and Cabinetmakers to control their work and prevent counterfeits by independent workers". The JME mark (Jurande des Menuisiers Ebénistes – a jury of cabinet masters) used by sworn joiners and cabinetmakers, was affixed in the master craftsman's workshop by the sword joiners during four annual inspections. By 1743, this law was being strictly enforced and any master craftsman who breached it risked "confiscation and a twenty pound fine per unmarked item". It was only abolished at the time of the Revolution.



Amongst the most successful sword joiners and cabinetmakers were Roger Vandercruse (1728-1799), Martin Carlin (circa 1730-1785), Jean-Henri Riesener (1734-1806), Charles Topino (1742-1803), Adam Weisweiler (1744-1820) and Jean-Joseph Chapuis (1765-1864). Perhaps the most renowned Dutch cabinetmaker was Matthijs Horrix (1735-1809) whose work was widely appreciated, especially by the Stadholders Court (House of Orange) and its entourage, because he worked to the fashionable taste of Paris.

The stamps of the master craftsmen, corporations and well-known workshops were applied using toughened iron stamps; hand hewn from one block. They were very expensive but were re-used over the course of many decades. Each stamp was therefore unique; either due to its size, the characters used, the layout or positioning of the letters.

B. Pallot, *L'Art du siège au XVIIe siècle*, ACR Gismondi, Paris, 1987

€ 8.000 - 10.000





203

A Dutch Rococo burr walnut cabinet

Circa 1770

The curved lower section with two large and two small drawers, the interior with five small drawers with compartments for cutlery, the doors with panels and the scalloped hood with carved crest, with later bronze mounts.

H. 240 x W. 180 x D. 60 cm

Provenance:

Private collection, the Netherlands

€ 1.000 - 1.500



204

A Louis XV bureau-cabinet*Southern-Germany/Austria, second quarter 18th century*

A burl wood veneered double bonnet desk, the top section with two panelled doors, fitted interior with a compartment, four drawers, a central slide front cabinet with two drawers, flanked by three drawers on each side above two drawers. The lower section with a double bent fall front door with various drawers above three shaped drawers resting on bun feet.

H. 239 x W. 120 x D. 64 cm

€ 800 - 1.200



205

A Rococo oak bureau cabinet*Maastricht/Liège, circa 1760*

The curved hood surmounted by a rocaille crest, two panelled bow front doors with carved rocaille corners, a single compartment, the lower section with a fall front desk, various compartments, above three convex-concave fronts, all carved in relief with C-scrolls and foliage, on carved feet.

H. 239.5 x W. 125 x D. 65 cm

€ 600 - 800



206

A Dutch pillow cabinet*Gelderland, late 17th century*

The oak cabinet with an overarching cornice with three lion heads, a plain architrave, the top section with two doors, horizontal extruded panels flanked by three pilasters, the lower section with vertical extruding panels flanked by three pilasters, the overall with rosewood and ebony veneer and resting on a profiled plinth and claw feet.

H. 191.8 x W. 178.7 x D. 75.4 cm

€ 800 - 1.200



207

An Dutch Empire mahogany chiffonier and a Dutch Empire 'secrétaire à abattant'

Circa 1800-1815

With two semidetached columns, six drawers, three small drawers with locks, ormolu mounts and marble top, the secrétaire with marble top, two ebonised columns and ormolu mounts.

H. 147 x W. 94.5 x D. 46 cm (chiffonier)

H. 145.5 x W. 98 x D. 41.5 cm (secrétaire)

(2x)

€ 600 - 800



208

A Dutch pillow cabinet or 'rankenkast'

Late 19th century

The cabinet with an overarching cornice with three lion heads, a plain architrave, two doors, vertical extruded panels with carved foliate garlands, flanked by three pilasters with carved foliate garlands, the lower section with a single drawer, carved lion heads, resting on bulbous feet.

H. 196.3 x W. 189.4 x D. 67.4 cm

€ 600 - 800



209

A mahogany Empire lit en bateau

Circa 1815

On short claw feet with a rectangular frame, the lateral rests ending in carved swan heads at one side.

H. 111 x W. 270 x D. 115 cm

Provenance:

Collection H.J. van Dam, Amsterdam

€ 800 - 1.000



210

An English Jacobean oak refectory table

Circa 1680

The rectangular table top with a partially carved architrave, resting on baluster-shaped legs, joined by stretchers.

H. 79 x W. 205 x D. 70 cm

Provenance:

Collection H.J. van Dam, Amsterdam

€ 600 - 800



211

A large Rococo-style giltwood console with marble top

Circa 1880-1890

On four legs, with scrolling plant and shell motif and marble top.

H. 72.5 x W. 140 x D. 82.5 cm

Provenance:

Private collection, the Netherlands

€ 2.000 - 3.000



212
A Louis XV-style desk
 Circa 1900

The desk top lined with three blackened canvas panels, the edges mounted with bronze profiles, the corners with cast shell ornaments, the drawers with burr walnut veneer, bronze handles, one side with faux drawers, the overall with a scalloped skirt and cabriole legs mounted with claw feet.
 H. 79 x W. 176 x D. 101 cm
 € 600 - 800



213
A Dutch Rococo-style rosewood commode with marble top
 Late 19th/early 20th century

Curved and with two small and three large drawers, with bronze mounts.
 H. 85 x W. 60 x D. 136 cm
 Provenance:
 Private collection, the Netherlands
 € 1.500 - 2.500



214
An English Jacobean period chest of drawers
 Circa 1680

An oak graduated chest with original brasses, carved geometrical motif and terminating on a moulded edge with original block feet, with two top drawers above three wide drawers, secondary wood consists of deal (white pine).
 H. 100 x W. 100 x D. 50 cm
 Provenance:
 Collection H.J. van Dam, Amsterdam
 € 1.500 - 2.000



215
A Georgian mahogany kneehole desk
 3rd quarter 18th century

A profiled oblong top, fall front desk drawer with gold-tooled brown leather top, fitted interior with eight compartments and three small drawers, the central cupboard below flanked by six small drawers, standing on shaped bracket feet.
 H. 82.6 x W. 90.9 x D. 56.4 cm
 € 600 - 1.000



216

A pair of Italian Empire-style consoles*Late 19th century*

Each with rectangular ochre marble top, a gold painted carved cornice, blackened plain architraves with gold painted rims, rosettes and on four black tapering legs.

H. 84.6 x W. 122.5 x D. 60.8 cm

(2x)

€ 2.000 - 3.000



217

A Liège Louis XVI oak trumeau*Belgium, late 18th century*

With a chamfered red mottled marble top, a carved wood fluted architrave with laurel festoons, corner rosettes, open tapering legs and rosette feet.

H. 69.3 x W. 88.9 x D. 35.5 cm

€ 600 - 800



218

A Napoleon II mahogany and gilt-bronze mounted centre table labelled Forest *Late 19th century*

With circular brown, red and green veined and mottled marble top above one drawer with leaf-tip cast borders enclosing foliate-cast panels, on square tapering legs joined by stretcher centered by a flower head, labelled *Forest, Ebenisterie, Tapisserie, Rue Cambacérés, Paris*. H. 78 cm / Diam. 96 cm

Provenance:

- Auction Christie's, Amsterdam, 2 October 2000, lot 245

- Collection F. van Oppenraaij, Amsterdam

€ 800 - 1.200



219

A French *chinoiserie* commode*19th century*

With a shaped mottled red marble top, cast gilt bronze mounts, two conforming drawers decorated with *chinoiserie* figures and a shaped apron centered by a pierced, scrolled and acanthus-sheathed rocaille clasp, the side aprons similarly shaped on cabriole legs with scrolled sabots each headed by a pierced and scrolled angle mount with foliate pendant.

H. 83.8 x W. 122.9 x D. 53.8 cm

€ 2.000 - 3.000



220

An exceptionally large set of sixteen Dutch mahogany Louis XVI chairs

Late 18th century

The oval-shaped back and bow fronted seat rail profiled, paternae with carved rosettes on fluted turned tapering legs, covered in close-nailed patterned beige velvet. H. 96.8 cm

Provenance:

- Auction Christie's, Amsterdam, 6 October 2004, lot 67

- Museum collection, the Netherlands

- Private collection, the Netherlands

(16x)

€ 3.000 - 5.000



221

A pair of Venetian painted and part-gilt grotto chairs

20th century

Each with back and seat modelled as a scallop shell, dolphin armrests and on rockwork carved legs.

H. 100.2 cm

(2x)

€ 1.500 - 2.500



222

A French signed Louis XVI white and grey-painted fauteuil

Nicolas-Quinibert Foliot (1706-1776), third quarter 18th century

The oval padded back and seat with egg-and-dart and coin moulding, covered in yellow floral silk, stamped to the underside *N.P. FOLIOT maître in 1729*. H. 90 cm

Provenance:

- Auction Christie's, Amsterdam, 15-16 December 2009, lot 387

- Private collection, the Netherlands

€ 600 - 800



223

A pair of fine Dutch Empire mahogany arm chairs

Circa 1800-1815

A rectangular top rail with white metal bands, curved armrests ending in swan heads, the railing mounted with plain white metal rosettes, on curved legs, silk jacquard upholstery.

H. 59.5 cm

(2x)

€ 600 - 1.000



224

Two Charles X ash wood armchairs

Circa 1820-1830

The frame with a rectangular backrest and two volute-shaped armrests ending in carved gold painted ornamentations and with carved palmette motifs, raised on four legs, two cabrioles, the striped textile upholstery with laurel wreaths and palmettes.

H. 93 cm

(2x)

€ 1.400 - 1.600



225

A Charles X mahogany extending dining table and eight mahogany chairs

Circa 1830, armchairs 20th century

The table with one extra part and with green leather inlay, with six dining chairs and two arm chairs, all with inlay.

H. 75 x W. 170 x D. 133.5 cm (table)

H. 82.5 cm (dining chairs)

H. 85.5 cm (arm chairs)

(9x)

€ 1.000 - 1.500



226

A set of four Louis XVI elm 'koreenaar' chairs*The Netherlands, late 18th century*

The top rail carved in a diamond motif, a pierced back splat, curved stiles and resting on four legs, the front legs fluted and tapering.

H. 87 cm

(4x)

€ 600 - 800



227

A Dutch colonial bench*Dutch East Indies, Batavia, 18th century*

An intricately flowering foliate carved backrest with finials and spiral turned wooden spindles, spiralling carved scrolling armrests, caned seat, carved apron and spiral turned tapering wooden legs.

H. 91.4 x 119.6 x 69.8 cm

€ 1.000 - 2.000



228

A Regency style mahogany extending dining table*Late 19th century*

The top with rounded edge on three pedestals, splayed quadripartite legs terminating in brass hairy-lion's paw caps and castors, with two extra leaves.

H. 71.4 x W. 362.7 x D. 121.3 cm

W. 480.7 cm (incl. two additional parts)

€ 600 - 1.000



229

A Cassina Taliesin dining set by Frank Lloyd Wright

Circa 1990

Designed in 1925 by Frank Lloyd Wright, manufactured by Cassina, Italy, comprising eight cherrywood Taliesin Barrel chairs with curved and pierced back, brown leather upholstery with a Taliesin cherrywood table with rectangular top on two rests with vertical bars and joined by stretchers, all pieces marked with Cassina stamp, serial no. (table: 01599, chairs: 16430, 16580, 16721, 16759, 16821, 16897, 17648, 17518) and signature *Frank Lloyd Wright*.

H. 71.6 x W. 250.1 x D. 69.8 (table)

H. 80.7 cm (chairs)

Note:

Taliesin was the estate of American architect Frank Lloyd Wright and located south of the village of Spring Green, Wisconsin, United States. The 600-acre (240 ha) property was developed on land that originally belonged to Wright's maternal family and is sometimes referred to as Taliesin East, Taliesin Spring Green or Taliesin North after 1937.

Two years after Wright left his first wife and home in Oak Park, Illinois with a mistress, he designed the Taliesin structure. The original building represented the principles of the Prairie School, emulating the flatness of the plains and the natural limestone outcroppings of Wisconsin's Driftless Area. The structure (which included an agricultural and studio wing) was completed in 1911.

Wright rebuilt the Taliesin residential wing in 1914 after it was destroyed by a fire. This second version was used only sparingly by Wright as he worked on projects abroad. One of these projects was the design of the Imperial Hotel in Tokyo, from which he returned in 1922. In April 1925 a fire caused by electrical problems destroyed the living quarters. The third version of the living quarters was constructed by Wright in late 1925. This set of chairs with matching dining table in this lot was designed for these new living quarters.

(9x)

€ 3.000 - 4.000



230
Two oak Amsterdamse School Art Deco lounge chairs
Circa 1930
 The adjustable back mounted with brass sheet finials and resting on four legs with chamfered corners.
 H. 110 cm
 Provenance:
 Collection H.J. van Dam, Amsterdam
 (2x)
 € 600 - 800



231
A pair of French signed Louis XVI mahogany stools
Late 18th century
 The circular seat, with jacquard silk velvet, resting on four tapered, fluted legs, marker R on the bottom.
 H. 44 cm / Diam. 52 cm
 Provenance:
 - Auction Christie's, Paris, 24 June 2009, lot 369
 - Private collection, the Netherlands
 (2x)
 € 2.000 - 4.000



232
A pair of numbered Italian giltwood footstools
Circa 1830
 Each upholstered in crimson velvet, on cabriole legs, inscribed 5589-2, one with label 1110.
 W. 32 cm
 Provenance:
 - Auction Christie's, London, 10 December 2009, lot 539
 - Private collection, the Netherlands
 (2x)
 € 600 - 800



233
A Louis XV and a Louis XVI chair
Circa 1750; circa 1770
 Both chairs gold painted and with matching red jacquard textile upholstery.
 H. 90.7 / 98.8 cm
 (2x)
 € 600 - 800



234

A Louis Vuitton trunk*First half 20th century*

LV monogrammed leather and brass bound, the overall covered in LV stamped fabric, brass corners, the lock stamped *Patent Louis Vuitton, 145. New Bond Street, London and 70. Champs Elysées, Paris. and 029505*, leather handles on the sides, monogrammed *M.L.C.*, the interior lined with fabric and labelled *Louis Vuitton 772808*, including original leather belt.

H. 56 x W. 61 x D. 49 cm

Note:

Harry Houdini, the great American escape artist, attempted to escape from a Vuitton box and lock. Houdini did not rise to the challenge, therefore the lock's effectiveness is indisputable and is still used today.

€ 4.000 - 6.000



235

A Louis Vuitton hard suitcase*Early 20th century*

Covered in LV fabric, the interior in leather, with brass locks.

H. 28.2 x W.39 x D. 9 cm

€ 600 - 1.000



236

A Dutch Renaissance oak chest stand after a design of Hans Vredeman de Vries (1527-1609)*Early 17th century*

Two volute shaped carved wood ends joined by a stretcher.

H. 31.5 x W. 24.5 x D. 58 cm

Provenance:

Baron Selys de Longchamps, Belgium

€ 600 - 800



237

A Rococo giltwood console with marble top*Possibly Stockholm, circa 1770, possibly Eduard Christian Lining (1744-1779)*Decorated with scrolling acanthus leaves and *rocaille* motif, on two legs, the edges of the marble top finely carved. H. 82.5 cm

Note:

Possibly monogrammed on the inside, with remains of a handwritten label with [...] *Christian* [...], as well as an old expedition label from Copenhagen.

€ 800 - 1.200



238

A Dutch oak draw-leaf table*Mid 17th century and later*

The rectangular top with two draw leaves (of a later date), above a profiled architrave, with fluted block corners and carved volutes above baluster-shaped legs, joined by a box-stretcher.

H. 191.8 x W. 178.7 x D. 75.4 cm

Provenance:

Collection H.J. van Dam, Amsterdam

€ 600 - 800



239

An early Dutch Art Deco pendant lamp

Nieuwe kunst/Amsterdamse School, circa 1920, possibly Fa. Winkelman & Van der Bijl

Designed as an openwork dome, to an openwork band with half domes above light bulbs, original tassels still present.

H. 146 cm

€ 600 - 800



240

An Irish mahogany wine cooler/cellarette

Circa 1830

A rectangular lidded compartment, a carved profile, plain railing, four turned and twisted legs, brass castors with brass lion head side carrying handles, without liner.

H. 65.8 x W. 49.1 x D. 32.2 cm

€ 600 - 800



241

Two sandstone garden ornaments

19th century

Two vase-shaped finials, one with two scroll shaped handles and carved studs, one with curved handles, a lambrequin garland and a beaded border.

H. 40.8 / 41.7 cm

Provenance:

Collection F. van Oppenraaij, Noordwolde

(2x)

€ 600 - 1.000



242

A polychrome giltwood sopraporta

18th century

The serpentine moulded pierced frame carved with flower sprays and C-scrolls.

W. 186 cm

Provenance:

Collection F. van Oppenraaij, Noordwolde

€ 600 - 800



243
A German walnut intarsia casket
 17th century

Rectangular, on spreading foot, inlaid with geometrical pattern, rectangular lock plate, hinged cover with swing handle, inlaid with fleurs-de-lys bandwork iron handle, hinges and lock.
 H. 12.1 x W. 21.6 x D. 12.3 cm
 € 600 - 800



244
A colonial mahogany sewing box
 19th century

With silver handle and lock plate, ebony corners, sliding lid and front, the interior with a large and small compartment, seven spools, a hidden drawer with coromandel/calamander veneer front.
 H. 19.1 x W. 29.4 x D. 19.9 cm
 € 400 - 600



245
A Dutch colonial brass document box
 Dutch East Indies, 19th century

The lid and box with pierced and chiselled foliate corner mounts and lockplate, cast carrying handles, the interior with compartmentalized insert, two pierced and chiselled lids, the box resting on toupee feet, including a key.
 H. 28.7 x W. 56.1 x D. 35.5 cm
 Provenance:
 Collection H.J. van Dam, Amsterdam
 € 600 - 800



246
A brass Christening dish
 16th century

A central medallion depicting Saint George and the dragon surrounded by concentric rims, a lobed circle and indistinctive chiselled decorative patterns.
 Diam. 42.3 cm
 € 600 - 800



247

A collection of three various Siegburg jugs*Germany, 15th century*

Two with concentric body cordons and a single handle, one with an extended edge and concentric rings at the base, all with thumbled feet.

H. 21.8 / 14.6 / 13.3 cm

(3x)

€ 600 - 800



248

A Flemish bronze measuring jug*15th century*

Of a pot-bellied lidless form with a rimmed edge and handle.

H. 18.8 x W. 14.2 cm

€ 500 - 800



249

A French bronze jug*16th century*

Of lidless form, with a spreading rim and a single handle embellished with a beaded pattern.

H. 15.3 x W. 17.5 cm

€ 500 - 800



250

A French bronze holy water bucket*15th century*

The mortar-shaped bucket decorated with rings, with two suspension eyelets.

H. 15.0 x W. 18.7 cm

€ 400 - 500



251

A French bronze mortar*Le Puy en Velay, 16th century*

The mortar with profiled edge decorated with cords, the sides with six double torsos alternated by buttresses, resting on a cord patterned rim, of an olive-brown patina.

H. 9.3 cm

Diam. 15.4 cm

€ 1.000 - 2.000



252

A French bronze mortar*16th century*

Embellished with a band of fleurs-de-lys on the spreading upper rim, with two handles shaped as lion and swine heads, alternated by foliate bands.

H. 8.3 x W. 15.2 cm

€ 600 - 800



253

A small French bronze mortar*Le Puy en Velay, 16th century*

With a curved upper rim with decorative nail heads, four fleurs-de-lys alternated by female torsos, on a rimmed base.

H. 6 cm

Diam. 10.2 cm

€ 600 - 800



254

A rare Italian bronze single handled mortar*16th century*

The spreading upper rim embellished with a laurel band above six panels, one with Jesuit emblem *IHS* (Iesus Hominum Salvator) in circular medallion and one with ribbed handle with hanging suspension, flanked by foliate columns above a festooned horizontal band.

H. 10.5 cm

€ 800 - 1.200



255
An Italian large bronze mortar

16th century

With a decoration of rings, and handle to each side, of blackish brown patina. H. 29 cm / Diam. 32 cm

Provenance:

- Collection Schloss Herblingen, Switzerland
 - Auction Christie's, Geneva, *Schloss Herblingen*, 14-18 September 1998, lot 793
 - Private collection, the Netherlands
- € 1.500 - 2.500



256
An English bronze mortar

17th century

With a rimmed edge and embellished with a band of three scallop shells and scrolls, on a rimmed base.

H 9.5 cm

Diam. 13 cm

€ 400 - 600



257
A Moorish small bronze mortar

Spain, 16th century

Of a pot-bellied globular body, with a row of twelve raised vertical ribs.

H. 8.1 cm

Diam. 9.3 cm

€ 400 - 600



258
A Dutch bronze mortar

Henryck ter Horst, 1613

Cast with a band of foliage and a band of foliage with putti and vases, with two handles, inscribed in raised lettering *HENRYCK..TER.HORST.ME.FECIT.AO.1613.*

H. 10.5 cm

€ 600 - 800



259

An unusual French Gothic iron-mounted wood and leather casket

Circa 1500

Oblong, the hinged case with iron mounts and Gothic lock plate, hinged handle, the leather tooled with Gothic motifs in circles, crosshatching to the sides and armorial shields flanking the lock plate, the interior lined with vellum.

H. 9.6 x W. 20.2 x D. 17.4 cm

€ 2.000 - 3.000



260

A pair of good Dutch miniature salute cannons*Possibly 18th century*

The cast bronze barrel with a coat-of-arms and monogrammed LV, on wooden and iron bases. L. 73 cm

Provenance:

- Auction AAG Auctioneers, Amsterdam, 1 October 2012, lot 48

- Collection H.J. van Dam, Amsterdam

(2x)

€ 1.500 - 2.500



261

A collection of three German tin Steckmedaille

Neurenberg, circa 1823; Neurenberg, circa 1813; Neurenberg, circa 1814

Comprising one depicting Pope Pius VII (1742-1823) and Maria on the reverse, by Thomas Stettner (1795-1872), holding seven double-sided etchings commemorating important historical and biblical moments; one depicting Justice, Wisdom and Unity by Thomas Stettner, holding six double-sided et-

ching commemorating important German battles alternated by text; and one with Frederick Wilhelm, Franz von Österreich and Tsar Alexander with Germania on the reverse, holding six double-sided etchings commemorating important German battles.

Diam. 5 cm

(3x)

€ 1.000 - 1.500



262
A bronze sculpture 'Buste de jeune femme au chignon' by Jef Lambeaux
 1852-1908
 Inscribed at the neck *Jef Lambeaux 1885*, her hair in a bun, on a marble base.
 H. 56.3 cm (incl. base)
 Provenance:
 Collection H.J. van Dam, Amsterdam
 € 600 - 800



263
A bronze sculpture of two wrestlers by Jef Lambeaux
 1852-1908
 Inscribed *F. Barbedienne fondeur.*, stamped *Reduction Mechanique A. Collas* and inscribed *Jef Lambeaux*
 H. 48.2 cm
 Provenance:
 Collection H.J. van Dam, Amsterdam
 € 600 - 1.000



264
A polychromed bronze figure after the 'Dancing faun'
 20th century
 The left hand raised, on rectangular base.
 H. 77.3 cm (incl. base)
 Provenance:
 Collection H.J. van Dam, Amsterdam
 Note:
 The original was found during the excavation of the 'House of the Faun' in Pompeii.
 € 400 - 600



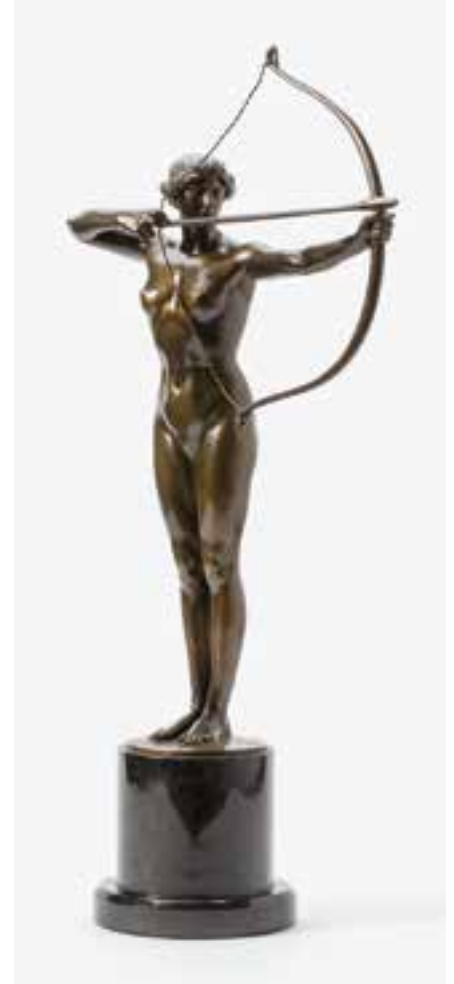
265
A bronze sculpture of the Virgin with Child and Angel possibly by Jean Jacques Feuchère (1807-1852)
 Circa 1840-1850
 On a base with foliate motif, elegantly modelled figures, the angel with separately cast wings. H. 33.5 cm
 Compare:
 Mantel clock by Honoré Pons in the collection of The Metropolitan Museum of Art, New York (access no. 1999.253), with sculpture after a model of Feuchère.
 € 600 - 800



266
A bronze sculpture 'Le Chemin Parcouru' by Georges Colin
 1876-1917
 Dark brown patinated, signed *G. Colin*, numbered *Bronze 1591* and with founder's mark.
 H. 66 cm
 Provenance:
 Collection F. van Oppenraaij, Noordwolde
 € 600 - 800



267
A French Belle Epoque marble sculpture of a girl with flowers
 Circa 1900
 The upper body and feet naturalistically carved in white marble, the dress and base in *breche violette* marble.
 H. 80 cm
 Provenance:
 Collection F. van Oppenraaij, Noordwolde
 € 600 - 800



268
A bronze sculpture 'Artemis' by Ferdinand Lepcke
 1866-1909
 On circular marble base, dark brown patinated, modelled as Artemis stretching her bow, signed *Ferd. Lepcke Berlin*, numbered *Bildguss 17* and foundry mark *Lauchhammer*.
 H. 65 cm
 Provenance:
 Collection F. van Oppenraaij, Noordwolde
 € 600 - 800



269

A large cast part-gilt bronze figure group 'Gloria Victis' by Antonin Mercié

1795-1875, cast by F. Barbedienne

The draped figure of Gloria carrying the angel Victis, on a naturalistic base inscribed *A.Mercié* to the front, inscribed *GLO-RIA VICTIS* to the front, *F.BARBEDIENNE Fondateur, Paris* to the side, cast in several sizes - the largest presented - on a white marble base. H. 140 cm (excl. marble base)

Provenance:

Collection F. van Oppenraaij, Noordwolde

€ 4.000 - 8.000



270
A pair of basswood ornamental angelheads
18th century
 The carved winged cherubs partially gilt and polychromed.
 H 21.2 cm
 H. 23.4 cm
 (2x)
 € 600 - 1.000



271
A German polychrome and giltwood sculpture of Saint George slaying the dragon
Early 17th century
 Partially gilt and polychromed, Saint George on a prancing horse and the dragon at its feet, on a profiled base.
 H. 26.4 cm
 € 1.200 - 1.800



272
A German oak corbel of a dragon and a man
18th century
 The dragon eating grapes from the basket on the back of a wine picker walking with a cane.
 H. 82.8 cm
 € 600 - 1.000



273
A pair of Dutch large oak corbels
16th century
 Carved with human heads and the sides carved with volutes.
 H. 44.3 cm
 (2x)
 € 700 - 900



274

A French oak sculpture of Madonna and Child

Early 17th century

The full-length figure of the crowned Virgin Mary with baby Jesus on her right arm, standing on a crescent moon.

H. 94.2 cm

€ 1.500 - 2.500



275

Three Russian icons*19th century*

One depicting the three Hierarchs St. Basil the Great, St. Gregory the Theologian, and St. John Chrysostom, below Saint Gregory and Saint Demetrius; one icon depicting Saint John the Baptist holding Jesus in a chalice and a scroll; and one depicting Saint Catherine.

H. 31.9 x W. 23.8 / H. 31.6 x W. 26.9 / H. 17.9 x W. 14.3 cm

(3x)

€ 600 - 1.000



276

Two Russian icons*19th century*

One depicting Saint Peter, Saint Paul and the Virgin Mary, the arched background with the head of Jesus, the white metal mount adorned with flowering foliate, the second panel depicting Saint John the Baptist dressed as a warrior and the Holy Spirit, mounted in gilt metal.

H. 30.9 x W. 26.4 / H. 29.6 x W. 25.3 cm

(2x)

€ 600 - 1.000



277

A Malines alabaster plaque of Christ washing his disciples feet*Circa 1600*

One disciple seated, Christ kneeling at his feet, one carrying an ewer, eight visible in the background and two indistinctly depicted.

H. 9.1 x W. 9.1 cm (excl. frame)

€ 800 - 1.200



278

A Malines alabaster plaque depicting the adoration of the shepherds

Circa 1600

This nativity scene of Jezus carved in high relief showing Saint Joseph, the Virgin Mary kneeling at the crib and four shepherds.

H. 15.7 x W. 12.9 cm

€ 2.500 - 3.000



279
A Dutch carved oak panel depicting Hope
Early 17th century

A standing female personification of Spes, goddess of Hope, a falcon on her left hand, an anchor at her feet, surrounded by elaborately carved scrolls and flowers with a cherub at the bottom. H. 40.5 x W. 27.5 cm

Provenance:

- Kunsthandel J. Dirven, Eindhoven
- Private collection, the Netherlands

€ 600 - 1.000



280
A German pine panel depicting Saint Wolfgang
16th century

Polychromed and partially gilt carved figure of Saint Wolfgang in a niche carrying a staff and a church, with two cherubs in the top corners.

H. 70.4 x W. 33.1 cm

€ 600 - 800



281
A Dutch oak openwork overdoor pediment
Late 17th century

A pierced panel carved with a central triumphing Bacchus figure in a drawn shell chariot, foliate, sunflowers, roses, birds, Bacchanti and grapes.

H. 26.1 x W. 147.8 cm

€ 800 - 1.200



282

An Antwerp ivory panel depicting the crowning with thorns

Belgium, 16th century

The panel carved with an arched interior, Christ shown wearing a robe and receiving the crown with thorns.

H. 11.7 x W. 7.5 x D. 0.9 cm

Note:

Right after the flagellation, Jesus receives a crown with thorns and a purple robe by Jesus' captors both to cause him pain and to mock his claim of authority.

€ 1.500 - 2.500



283

A Flemish polychrome and giltwood group of the Virgin and Child

Malines, 16th century

The crowned Virgin Mary with long hair wearing a blue robe over a white dress holding Jezus on her arm, the child making a blessing gesture and holding a cross-bearing orb.

H. 31.9 x W. 10.8 x D. 7.9 cm

€ 5.000 - 8.000



284

A rare German polychromed and giltwood tabernacle

17th century

Blue polychromed, on scalloped base resting on four bun feet, above which a giltwood fluit and floral festoon motif, on the central panel door the figure of Salvator Mundi under a cherub, flanked by two apostles, alternated by caryatid angels supporting the scalloped hood. H. 94 x W. 85 x D. 53 cm

Provenance:

Collection F. van Oppenraaij, Noordwolde

€ 2.000 - 3.000



285
An oak sculpture of three Apostles

16th/17th century

Possibly with traces of the original polychromy, possibly depicting Saint John, Saint Peter and Saint James, two standing figures, one with folded hands, the third figure seated.

H. 26.8 cm

€ 600 - 1.000



286

An unusual Dutch oak tobacco box

17th century

The lid with a human figure and carved geometrical pattern, the sides carved with biblical scenes from Genesis, corner pilasters and Old Testament verses.

H. 18.2 x W. 12.8 x D. 9.7 cm

€ 1.800 - 2.500



287

A pocket watch with Rococo walnut display stand

18th century

The pocket watch with enameled dial, Roman numerals, the edge of the case with acanthus band, the back with a classical scene, the walnut stand carved with rocailles and a human figure.

H. 31.4 cm (stand)

Diam. 5.1 cm (watch)

€ 1.200 - 1.800



288

Two finely carved Dutch oval boxwood snuffboxes

17th century

One depicting 'Het beleg van Leiden' (siege of Leiden) the self-sacrifice of Pieter Adriaansz. van der Werff (1529-1604) and Magdalena Moons (1541-1613) obstructing her lover Francisco de Valdez (1522-1680), two cherub heads, a flowering garland and a medallion with three animal heads, the other depicting putti and flora, a carved acanthus garland, two female busts and a medallion with Leda and the Swan.

H. 3.2 x W. 9.8 / H. 3.4 x W. 9.4 cm

€ 1.500 - 2.500



289

A Dutch oak ship ornament 'hakkebord'*17th century*

Polychromed in green, gold and red, crowned by a finial and two lions holding a shield, a carved laurel wreath with three medallions, the sun, hope and love, a pediment depicting a biblical scene (Gen. 18:1-10, And the Lord appeared to Abraham), at the back a heraldic alliance crest, four weapons of the Dutch towns Amsterdam, Hoorn, Enkhuizen and Franeker.

H. 57.6 x W. 72.8 cm

€ 3.000 - 4.000



290
A carved Italian alabaster pedestal

19th century

On octagonal base, supporting the column, sprouting from a baluster shape, with circular top.

H. 108 cm

Provenance:

Collection F. van Oppenraaij, Noordwolde

€ 600 - 800



291
A black marble console

20th century

In Emser marble, with rectangular base supporting six small columns with gilt-bronze mounts, with oval-shaped top.

H. 81 cm

Provenance:

Collection F. van Oppenraaij, Noordwolde

€ 600 - 800



292
Three black marble pedestals

20th century

Each with octagonal base, supporting a Corinthian column with gilt-bronze mounts, with octagonal top.

H 114 / 120 / 121 cm

Provenance:

Collection F. van Oppenraaij, Noordwolde

(3x)

€ 1.000 - 1.500



293
A black and brown marble pedestal

20th century

A rectangular top above four cylinder architraves, carved marble capitals, bi-coloured columns, octagonal bases and a single square base resting on four feet.

H. 113.4 cm

Provenance:

Collection F. van Oppenraaij, Noordwolde

€ 600 - 800



294

A pair of marble garden vases

18th century

Each on square foot, supporting a vase with wide rim.

H. 86.2 cm

Diam. 66.9 cm

Provenance:

Private collection, the Netherlands

(2x)

€ 3.500 - 4.500



295

A Nymphenburg floral part dinner service*20th century, printed green and blue marks*

Decorated with flower bouquets surrounded by scattered flowers and gilt rims, comprising thirty-three dinner plates, diam. 24.5 cm; nine dessert plates, diam. 22.5 cm; ten soup plates, diam. 24 cm; a tureen and cover, W. 38 cm; two small tureens and covers, W. 25 cm; a circular serving dish, W. 37.5 cm; two circular serving dishes, W. 35.5 cm; an oval serving dish,

W. 50.5 cm; two oval serving dishes, W. 44 cm; two small oval serving dishes, W. 21.5 cm; two sauce-boats, W. 26 cm; a square bowl, W. 20.5 cm; two tazza's, diam. 23 cm.

Provenance:

Private collection, the Netherlands

(68x)

€ 1.000 - 2.000



296

A Berlin (K.P.M.) and Fürstenburg composite part dinner service*Late 19th/ 20th century, blue sceptre and green orb printed KPM marks and various Fürstenburg marks*

Most with ozier-moulded borders and gilt rims, comprising twenty-one dinner plates, diam. 24.5 cm; eighteen breakfast plates, diam. 21.6 cm; six soup plates, diam. 21.6 cm; twenty-three deep dinner plates, diam. 24.5 cm; twenty-five dessert plates, diam. 19.5 cm; twelve side plates, diam. 15 cm; nine

saucers, diam. 14.5 cm; a circular tureen and cover, W. 33.5 cm; four tureens and covers, W. 29 cm; two tureens and covers, W. 20 cm; four serving bowls, diam. 22 cm; 2 oval dishes, W. 43 cm; an oval dish, W. 39 cm; a circular serving dish, diam. 33 cm; a sauce-boat, W. 26 cm; and two tea-cups.

Provenance:

Private collection, the Netherlands

(132x)

€ 800 - 1.200



297

A Royal Copenhagen ichthyological part dinner service

20th century, blue wave and green printed marks

Each moulded with fish-shaped border and variously decorated with a fish, identified in Latin on the base, comprising nine dinner plates, diam. 23.5 cm, shape number 3002; a circular tureen and cover, diam. 20.5 cm, shape number 3005; an oblong serving tray for fish shape, W. 60 cm number 3001; and a sauce-boat, 25.5 cm, shape number 3003.

(12x)

€ 3.000 - 5.000



298

A Meissen porcelain Zwiebelmuster part dinner service

20th century, marked with blue crossed sword marks

Painted with the well-known floral motif, comprising twenty dinner plates, diam. 25 cm; an oval tureen and cover, W. 36 cm; a serving dish and cover, W. 33.5 cm; a sauce-boat, W. 21 cm; a cup; a square salad bowl, W. 25 cm; and an oval serving dish, W. 46.5 cm.

Provenance:

Private collection, the Netherlands

(26x)

€ 600 - 800



299

A Royal Copenhagen part dinner service

Denmark, 1870-1890, blue wave and green printed mark

With gold encrusted band and flower basket pattern, comprising one tureen W. 30.6 cm, serial number 9347, with underplate W. 38.3 cm, serial number 9001; two small tureens, W. 26.8 cm, serial number 9348; five oval serving platters (one large, W. 47.6 cm, serial number 9009, two medium W. 40.6 / 41.6 cm, both with serial number 9010, one small W. 38.3 cm and one elongated W. 61.6 cm,

serial number 9012); one round serving platter diam. 36.7 cm serial number 9014; two sauce boats, W. 22.2 cm, serial number 9344; three small oval plates W. 22.3 cm; serial number 9026; 21 dinner plates diam. 25.7 cm; serial number 10519; eight soup plates, diam. 25.6 cm, serial number 10515; and seven side plates, diam. 15.4 cm, serial number 10522.

(51x)
€ 800 - 1.200



300

A Rosenthal part dinner service designed by Gianni Versace

Stamped Rosenthal marks, circa 1995

Decorated with the Medusa pattern, comprising a large serving plate; six dinner plates; six breakfast plates; six dessert plates; six tea-cups and saucers; six coffee-cups and saucers; six mocha-cups and saucers; two square serving dishes; and a pair of candlesticks.

H. 21.5 cm (candlesticks)

Diam. 30.5 cm (largest)

(59x)

€ 600 - 1.000



301

A collection of twelve Dutch octagonal 'Rozenburg' cups and saucers

Haagsche Plateelfabriek Rozenburg N.V., 1904-1911, painted by S. Schellink, J.W. van Rossum and C.W.J. 't Hart

Each variously decorated with flowers and birds.

Diam. 13 cm

(24x)

€ 4.500 - 5.500



302
A large French Art Nouveau glass Gallé vase
Nancy, 1890-1900
 Decorated with chrysanthemum, signed Gallé.
 H. 34.5 cm
 Provenance:
 Private collection, the Netherlands
 € 800 - 1.200



303
Three French glass vases
Circa 1900
 Comprising a square etched purple and orange glass vase by Legras; a small lustre-glazed vase decorated with fruit-bearing leaves by Montieres; and an opaque vase with cameo decoration of leaves by Muller Freres, Luneville.
 H. 10.5 - 22.5 cm
 (3x)
 € 600 - 1.000



304
A large Dutch Juliana-earthenware vase
Haagsche Plateelfabriek Rozenburg N.V., 1911
 Decorated with panels enclosing farmers' maids.
 H. 45.5 cm
 Provenance:
 Collection H.J. van Dam, Amsterdam
 € 500 - 700



305
Three various Dutch polychrome-decorated earthenware vases
N.V. Haagsche Plateelfabriek Rozenburg, 1900; Schoonhoven, circa 1900; and Pottery Rembrandt, Nijmegen, circa 1900
 Comprising a four-handled vase decorated with flowers; a two-handled vase "Fauna" decorated with a bird of paradise; and a two-handled pear-shaped vase painted with flowers.
 H. 19.5 - 31 cm
 Provenance: Collection H.J. van Dam, Amsterdam
 (3x)
 € 400 - 600



306
A glass vase by Bořek Šípek
 1949–2016

A prototype for *Chalupa vase* (2007).

H. 43.5 cm

Provenance:

Acquired directly from the artist by the present owner
 € 1.200 - 1.400



307
A glass vase by Bořek Šípek
 1949–2016

A prototype, white glass threads and glass leaves.

H. 29.5 cm

Provenance:

Acquired directly from the artist by the present owner
 € 1.400 - 1.600



308
A red glass Rosenthal vase by Bořek Šípek
 1949–2016

A prototype, a red ribbed neck and a wide base, signed and numbered 4/49 and marked *Rosenthal*.

H. 75.7 cm

Diam. 32.5 cm

Provenance:

Acquired directly from the artist by the present owner
 € 500 - 700



309
A red glass spherical vase by Bořek Šípek
 1949–2016

Unique work, a red sphere wrapped in metal thread on a spherical stem and a clear foot.

H. 43.9 cm

Provenance:

Acquired directly from the artist by the present owner
 € 1.200 - 1.400



310
A glass bowl by Bořek Šípek
 1949–2016

A prototype, with four ribbed handles, the interior of the bowl with glass ribs and coloured glass finials, signed on the edge of the bowl.

H. 23.8 cm

Provenance:

Acquired directly from the artist by the present owner
 € 1.200 - 1.400



311
A glass sphere by Bořek Šípek
 1949–2016

A prototype for a clear glass sphere with various coloured rings.

H. 16.5 cm

Provenance:

Acquired directly from the artist by the present owner
 € 500 - 700



312
A blue glass coupe by Bořek Šípek
 1949–2016

With stainless steel mounted stem.

H. 15.5 cm

Diam. 25 cm

Provenance:

Acquired directly from the artist by the present owner
 € 700 - 900



313
A wood base by Bořek Šípek
 1949–2016

A square wood bowl on four horn-shaped wood feet, signed on the underside.

H. 18 cm

Provenance:

Acquired directly from the artist by the present owner
 € 500 - 700



314
A glass coupe by Bořek Šípek
 1949–2016

A white porcelain bowl with scalloped and pierced edge, four green ribbed glass horn-shaped handles, on a green stem and a disc foot, signed on the foot.

H. 53 cm

Diam. 30 cm

Provenance:

Acquired directly from the artist by the present owner

€ 1.000 - 1.200



315
A glass goblet by Bořek Šípek
 1949–2016

A prototype with two amber coloured ribbed glass handles, signed on the foot.

H. 27 cm

Provenance:

Acquired directly from the artist by the present owner

€ 700 - 900



316
A glass wine cooler by Bořek Šípek
 1949–2016

A prototype, with a clear glass handle and a white rim.

H. 57 cm

Provenance:

Acquired directly from the artist by the present owner

€ 600 - 800



317
A glass bowl by Bořek Šípek
 1949–2016

Prototype, a clear glass bowl with red stripes, signed and dated 1983 on the foot.

H. 28.3 cm

Diam. 29.8 cm

Provenance:

Acquired directly from the artist by the present owner

€ 1.000 - 1.200



318
A glass vase by Bořek Šípek
 1949–2016

A prototype, a clear glass sphere surrounded by ribbed leaves on a high stem and a disc foot.

H. 31.5 cm

Provenance:

Acquired directly from the artist by the present owner

€ 500 - 600



319
Two glass vases with white and black stripes by Bořek Šípek
 1949–2016

One vase with a frilly glass edge on a baluster vase with white stripes on a disc foot, the other vase with a fragmented design and black stripe pattern. H. 45 / 52 cm

Provenance:

Acquired directly from the artist by the present owner
 (2x)

€ 1.200 - 1.400



320
Two glass coupes by Bořek Šípek
 1949–2016

A glass prototype with three red horn-shaped feet and a coupe with three clear glass feet, signed on the edge.

H. 24 / 23.5 cm

Provenance:

Acquired directly from the artist by the present owner
 (2x)

€ 1.200 - 1.400



321
A collection of Dutch and French modern glass vases and dishes
 20th century, mainly by A.D. Copier

Comprising a pair of amber glass vases with vertical optical layers; a clear glass vase with etched decoration of deer and birds; a clear glass vase with crackles; a clear glass dish with crackles; a green glass Serica vase with crackles; a green and clear glass Unica vase blown with bubbles, marked '790413, Oude Horn, A.D. Copier'; a dark green dish with crackles; a milky glass dish by Willem Heesen, marked '7-8-8, oude horn and WH'; a green glass vase by Charles Schneider, France; and a purple and orange footed bowl by Charles Schneider, France. H. 9 - 38 cm (11x)

€ 1.000 - 2.000



322

Two small Dutch Delft blue and white vases

One marked for De Klaauw, 17th-18th century, the other marked 'GK' for Gerrit Pieterszn. Kam at Drie Posteleynne Astonne, 1679-1700

Each of double gourd shape, one decorated with flower-heads and the other with birds amongst flowers.

H. 13.5 cm

(2x)

€ 600 - 800



323

Two Dutch Delft blue and white double-gourd vases and a jar

The double-gourd vases marked 'PK' for Pieter Gerritsz. Kam or widow Kam- van der Koot at Drie Posteleynne Astonne, 1700-1716; the jar 18th century

Each variously decorated with flowers.

H. 36 - 49 cm

(3x)

€ 800 - 1.200



324

A Dutch Delft blue and white chinoiserie 'kraak porselein'-style charger

Circa 1700

Decorated in the Chinese Wanli style with a central star-shaped panel enclosing a flower basket with peony and pomegranate, surrounded by lappet panels at the rim with peach and anti-quinities.

Diam. 40.5 cm

€ 600 - 800



325

A Dutch Delft blue and white oval plaque

18th century

Decorated with a flower vase filled with an abundant bouquet of tulips, carnations and peonies, flanked by a parrot and a dove.

H. 53 x W. 42.5 cm

€ 1.000 - 1.500



326
Five various blue and white *chinoiserie* faience dishes
Frankfurt and Delft, circa 1700

Comprising three dishes variously decorated in the Chinese Transitional style with figures in landscapes; a dish decorated in the Wanli style with a central star-shaped panel enclosing ducks at a riverbank; and a dish painted with a crane amongst peony.

Diam. 35.5 - 39.5 cm

(5x)

€ 600 - 800



327
A Dutch Rococo Delft blue and white five-piece matched garniture

The beaker vases and one baluster vase with hatchet mark and one beaker vase also with 118 mark for De Porceleyne Bijl, second half 18th century

Comprising three baluster vases and covers and two octagonal beaker vases, each front side moulded with a panel enclosing river landscapes and one baluster vase with a figure on a riverbank. H. 36.5 - 37.5 cm (5x)

€ 600 - 800



328
Two Dutch Delft blue and white gadrooned *chinoiserie* dishes

Circa 1700

Each decorated to the central panel with an oriental figure in a garden setting, surrounded at the shaped rim with floral and figural panels.

Diam. 34.5 cm

(2x)

€ 800 - 1.200



329
A Dutch Delft polychrome figure of a child in a high chair
18th century

The six-sided high-backed chair decorated with floral panels and enclosing a baby girl wearing a green dress with a small teapot and cup and saucer before her.

H. 10 cm

€ 600 - 800



330

A collection of twenty rare Dutch polychrome ceramic 'Collaert' tiles

17th century

Depicting a swallow, a snail, a bird, grasshopper, heron, stork, eagle, pigeon, bittern and several other flowers and birds, based on engravings by Adriaen Collaert (1560-1618), with 'ox-head' corner motifs.

Approx. H. 13 x W. 13 cm

(20x)

€ 5.000 - 8.000



331
A collection of six Dutch blue and white ceramic tiles depicting craftsmen

17th century

Amongst which depicting a milkmaid with a yoke, a sawyer, a basket braider and a shoemaker, four with 'ox-head' corner motifs, two with quarter rosette corner motifs.

Approx. H. 13.5 x W. 13.5 cm

(6x)

€ 1.000 - 1.400



332
A collection of six Dutch blue and white ceramic tiles

17th century

Depicting mythological sea-creatures, with spider corner motifs.

Approx. H. 13 x W. 13 cm

Literature:

Jan Pluis, *De Nederlandse tegel decors en benamingen, 1570-1930*, Primavera Pers, Leiden, 1998.

(6x)

€ 600 - 1.000



333
A collection of three Dutch blue and white ceramic tiles with open air landscape decor

17th century

Depicting travellers in a landscape, the hay harvest, and fishery.

Approx. H. 13 x W. 13 cm

Literature:

Jan Pluis, *De Nederlandse tegel decors en benamingen, 1570-1930*, Primavera Pers, Leiden, 1998, p. 151.

(3x)

€ 600 - 1.000



334
A collection of three Dutch blue and white ceramic 'Scheepjes' tiles depicting ships

17th century

Painted with two ships with the Dutch flag and with 'ox-head' corner motifs, one with spider corner motif.

Approx. 13 x 13 cm

Literature:

Jan Pluis, *De Nederlandse tegel decors en benamingen, 1570-1930*, Primavera Pers, Leiden, 1998.

(3x)

€ 700 - 900



335

A collection of twenty-three rare Dutch polychrome ceramic 'Collaert' tiles

17th century

Depicting an owl, toucan bird, kori bustard, kingfisher, ostrich, Eurasian hoopoe, dragonfly, turkey, hummingbird, goose, caterpillar, iris flower, flying owl, butterfly and finch amongst others, based on engravings by Adriaen Collaert (1560-1618), with 'ox-head' corner motifs. Approx. H. 13 x W. 13 cm

(23x)

€ 2.000 - 4.000



336
A collection of nine Dutch blue and white and manganese ceramic village landscape tiles

Late 18th century

The landscapes in octagons, depicting, amongst other scenes, a windmill, a bridge, a castle, travellers and a church.

Approx. H. 13 x W. 13 cm

Literature: Jan Pluis, *De Nederlandse tegel decors en benamingen, 1570-1930*, Primavera Pers, Leiden, 1998.

(9x)

€ 600 - 1.000



337
A collection of twenty-nine various Dutch blue and white ceramic tiles with biblical scenes

18th/19th century

With depictions from the old and the new testament, two sets of four (18th century), a set of two (18th century), a set of sixteen (18th/19th century), and a set of three (circa 1900).

Approx. H. 13 x W. 13 cm

(29x)

€ 600 - 800



338
A rare pair of Rotterdam polychrome tiles depicting a mythological sea-creature

The Netherlands, 17th century

Handpainted glazed ceramic in blue, green and ochre, the mermaid creature blowing on a shell-shaped horn and with a long fishtail.

H. 13.2 x W. 13.1 / H. 13.1 x W. 12.9 cm

(2x)

€ 1.000 - 3.000



339
Two Dutch polychrome ceramic quadrant tiles

First quarter 17th century

In blue, yellow, ochre and green, one depicting a leaping hare, the other depicting a pikeman blowing a horn, both framed in a diamond with a palmette corner motif in reverse.

H. 13.3 x W. 12.9 / H. 13.1 x W. 13.1 cm

(2x)

€ 600 - 800



340

A large Japanese Imari dish*19th century*

Decorated with a central flower basket, surrounded by three shaped panels enclosing *ho-o* birds on a floral ground.

Diam. 57 cm

Provenance:

Collection H.J. van Dam, Amsterdam

€ 600 - 800



341

A pair of Japanese Imari octagonal dishes*19th-20th century*

Each raised on four bracket feet, the centre decorated with flowers and the sides openworked with floral motives.

Diam. 27 cm

Provenance:

Collection H.J. van Dam, Amsterdam

(2x)

€ 400 - 600



342

A Japanese Nabeshima dish

Raised on a high foot and decorated in tones of underglaze blue, red, yellow and turquoise with a central 'long life' character surrounded by a row of pearls and precious objects at the rim.

Diam. 30 cm

Provenance:

Collection H.J. van Dam, Amsterdam

€ 400 - 600



343

A large Japanese Imari Namban 'black ship' bowl*19th century*

Decorated to the interior with panels of black ships and Dutchmen on a diaper ground embellished with flower heads.

Diam. 47 cm

Provenance:

Collection H.J. van Dam, Amsterdam

€ 800 - 1.200



344
A Japanese massive dark wooden okimono of two rabbits
Taisho-early Showa period, first half 20th century
 Elegantly carved rabbits at play, the bottom marked *Hiroyuki*.
 H. 28.5 cm
 € 1.200 - 1.800



345
A Japanese low black and maki-e lacquered table, zen
Early Showa period, 1st half 20th century
 Decorated with three left turning comma shapes, tomoe in gold and silver maki-e, in wood box.
 H. 13 x W. 60 x D. 39 cm
 € 600 - 800



346
A Japanese black and maki-e lacquered hirobuta tray
Showa period (1926-1989)
 Decorated with three painted fan shaped panels, in gold and silver maki-e, with some red, brown and sprinkled gold, in signed wood box.
 H. 5 x W. 52.5 x D. 36.5 cm
 € 600 - 800



347
A Japanese black lacquered hirobuta tray
Showa period (1926-1989)
 Depicting the Four Nobles, Japanese apricot blossom, kobai, chrysanthemums, ran-orchids and bamboo, in original box signed by *Bunshū* from Kyoto.
 H. 7.5 x W. 64 x D. 44.5 cm
 € 600 - 800



348
A collection of three Japanese netsuke
19th century

One ivory netsuke carved as a child with a fruit figure, signed *Ko Gyoku*; one in ivory, carved as an insect on a piece of fruit, signed *Gyokusai Mitsuahina*; and one in boxwood, carved as a male figure with a bag.

H. 3 / 2 / 4.5 cm

(3x)

€ 600 - 1.000



349
A collection of seven Japanese ivory netsuke
Meiji period (1889-1912) and later

Comprising of two figures fighting; two ladies with child; a child with mask; oni with a conch shell; a demon with changing face; three monkeys; and a large *karako* dragon dance.

L. 3 - 6 cm

Provenance:

Private collection, the Netherlands

(7x)

€ 500 - 800



350
A large Chinese blue-glazed martavan storage jar
Late Qing dynasty (1644-1912)

The shoulder applied with lug handles, the body moulded with dragons, covered overall with a dark purplish-blue glaze.

H. 56 cm

€ 700 - 900



351
A Chinese or Southeast Asian amber-glazed storage jar
Ming dynasty (1368-1644)

The shoulder applied with lug handles, the body moulded with stylised leaves and two confronting dragons, the base inscribed with possibly Malayan script.

H. 23 cm

€ 500 - 700



352
A pair of Chinese Qingbai bowls

Song dynasty (960-1279)

The bowls each raised on a short cylindrical foot and modelled with a slightly flared rim, covered overall in a delicate greyish white glaze. Diam. 14.4 cm

Provenance:

- E. Pranger Oriental Arts, Amsterdam (1989)
- Private collection, the Netherlands

(2x)

€ 1.200 - 1.600



353
A Chinese flower-shaped Qingbai bowl

Song dynasty (960-1279)

Modelled with six lobes, the interior incised with cloud-shaped patterns, covered overall in a greyish white glaze pooling in the recesses.

Diam. 11.9 cm

Provenance:

- E. Pranger Oriental Arts, Amsterdam (1990)
- Private collection, the Netherlands

€ 800 - 1.200



354
A Chinese Qingbai-type bowl

Raised on a short cylindrical foot and wide slightly flared rim, the interior incised with scrolls, covered overall with a bluish white glaze.

Diam. 19.2 cm

€ 700 - 900



355
A pair of Chinese export green-glazed models of parrots and a pair of cranes

The parrots standing on an openwork base, with moulded and incised feathers, the cranes modelled in mirror image and painted in *famille rose* tones.

H. 21 - 41.5 cm

Provenance:

Collection H.J. van Dam, Amsterdam

(4x)

€ 500 - 700



356

A collection of Vienna bronzes*Austria, circa 1900, two by Franz Bergmann*

All figures of cold painted bronze; a reflecting boy seated on a Egyptian carved stone slab, marked *Geschützt 2897* and *B* for Bergmann; an Arab boy lying on a carpet, alongside a detachable table with hookah, numbered *3005* and *B* for Bergmann; a boy riding a donkey; a boy playing the tambourine, three vases, a boy with a whip beating a donkey.

H. 8.9 cm (the largest)

(8x)

€ 1.000 - 2.000



357

A gilt bronze sculpture of a Shepherd dog by Charles Paillet*1871 - 1937*

The dog resting, with raised head. H. 24.2 cm

Provenance:

Collection H.J. van Dam, Amsterdam

Note:

Charles Paillet was a renowned naturalistic animalier, famous for his designs of car mascottes.

€ 600 - 800



358

A Grand Tour gilt-bronze sculpture after Verrocchio*18th/early 19th century*

Modelled after the Equestrian statue of Bartolomeo Colleoni by Andrea del Verrocchio in 1480, Florence, signed *Verrocchio* and with founder's mark *F.Barbedienne.fondeur*.

H. 41.5 cm

Provenance:

Collection F. van Oppenraaij, Noordwolde

€ 600 - 800



359

A pair of fine Japanese paintings of a bird of prey
Bakumatsu period (1853-1868)

Each opposite, depicting a fierce domestic hawk on a wooden pole, with silverleaf surround, in black frame.

H. 159.5 x W. 62 cm (each)

(2x)

€ 900 - 1.100



360

A rare Russian dagger

19th century

The ivory hilt elegantly decorated with a male's head with beard and fur hat, sprouting from two acanthus leaves, the eyes with gemstone inlay, brass guard, to a plain blade, the scabbard with horn end, wrapped with reptile skin and brass.

L. 34 cm

€ 600 - 800



361

An Egyptian bronze sculpture of the seated goddess Bastet

6th - 4th century BC and later

The elegantly cast cat seated, with ears pierced and serene expression, large parts of the bronze of later date.

H. 25 cm

Provenance:

Collection J.B.W. Polak, Amsterdam, thence by descent to H.J. van Dam, Amsterdam

€ 1.500 - 2.500



362

A collection of five Egyptian faience scarabs

2nd - 1st millennium BC

Three beetles mounted as a ring, one with wings mounted in wood frame.

L. 11 - 14 mm

Provenance:

Collection J.B.W. Polak, Amsterdam, thence by descent to H.J. van Dam, Amsterdam

(5x)

€ 1.000 - 2.000



363
Four various earthenware and stone objects
Pre-Columbian

Together with a seated Colima figure with a pointed headdress and raised, hollow right arm; a standing Olmec figure with outstretched arms; a bulbous Nayarit vase; and a marble bowl with open lid. H. 26.2 / 17.2 (excl. stand) / 13.3 / 8 cm

Provenance:

Collection H.J. van Dam, Amsterdam

(4x)

€ 600 - 800



364
A pair of Ataoro wood ancestor figures
Southern Moluccas, first half 20th century

Elegantly carved standing, with prominent triangular nose, horizontal slit brows and serene expression, slender legs and arms, connected by a rope, the male figure with loin cloth, the female with hip cloth, with black patina.

H. 16.6 / 16.7 cm

Provenance:

Private collection, Noord-Brabant

€ 600 - 800



365
A wood Lake Sentani bowl (hoite kabam)
New Guinea, 1960's

Decorated with carved swirls, polychromed.

L. 94 cm

Provenance:

- Collection Arnold Ab (University for Anthropology Museum in Abepura 1970's)

- Private collection, Noord-Brabant

€ 600 - 800



366
A Lake Sentani cassowary skin and wood drum
New Guinea, circa 1950's

Of hour-glass shape, with carved geometric and swirl motif, the handle in the form of a male figure.

H. 61.5 cm

Provenance:

Private collection, Noord-Brabant

€ 600 - 800



367

A large polychromed wood marind-anim drum

South-coast New Guinea, 1920's-1930's

Of hour-glass shape, red, white and black polychromed, carved with swirls, with animal skin covering, bone and tuning wax, decorated with rattan and cassowary feathers.

H. 117 cm

Provenance:

Private collection, Noord-Brabant

€ 1.000 - 2.000



368

A wooden polychromed Jagai shield and a spear, arrows and bow

New Guinea, Mappi area, 1920's-1930's

With carvings of figures and spirals, polychromed.

L 177.3 cm

Provenance:

Obtained by the father of the present owner, from an aviator in the early days of the Royal Dutch Airlines (KLM) in the 1940's

€ 1.000 - 1.500



369

A large Humbolt-bay wood paddle with figure-carved end

New Guinea, circa 1900

One side of the blade finely carved with a saw-fish, and hammer-head sharks, the other side with the latter, to a plain rod, with ancestral figure end, with polychromy traces. L. 220 cm

Provenance:

Collection Koens, Royal Dutch Marine officer and later boatsman in the Dutch-Indies in the early 20th century, thence by descent to the present owner, a private collector, Noord-Brabant

€ 1.800 - 2.200



370

A rare large Lake Sentani Ondofolo bowl (hoite kabam)*New Guinea, circa 1860*

The shallow lenticular oval bowl with finely carved scrolling ornament and carved lizard to the exterior, traces of polychrome.
L. 150.2 cm

Provenance: Collection Koens, Royal Dutch Marine officer and later boatsman in the Dutch-Indies in the early 20th century, thence by descent to the present owner, a private collector, Noord-Brabant
€ 2.200 - 2.800



371

A rare Lake Sentanti bone spoon

Circa 1850

Finely decorated with carved swirls, of deep brown caramel patina. L. 20.3 cm

Provenance:

- Collection Arnold Ab (University for Anthropology Museum in Abepura 1970's)

- Private collection, Noord-Brabant

Compare: S. Kooijman, *The art of Lake Sentani*, Museum of Primitive Arts, New York, 1959, no. 89 (ill.)

€ 600 - 800



372
Jacobus Theodorus Abels
 (Amsterdam 1803 - Abcoude 1866)
Figures in a river landscape
 Signed lower left
 Oil on panel, 17.9 x 22.9 cm
 € 700 - 900



373
Marius Bauer
 (The Hague 1867 - Amsterdam 1932)
A Street in Constantinople (1893)
 Signed l.r. and annotated *Carrefour* lower center. Edition of 100
 Etching, 54.6 x 69.9 cm (sheet size)
 € 500 - 800



374
Gerti Bierenbroodspot
 (Amsterdam 1940)
Versace (Ragazzi di Versace)
 Signed, titled and dated *Siena 07/VI/1997* lower left. Mixed media on rice paper, 78.7 x 46.4 cm
 € 600 - 1.000



375
Rob Cerneüs (Amsterdam 1943)
Two geese (1993)
 Both signed underneath
 Both bronze, both H. approx. 95 cm (including pins) (2x)
 € 500 - 1.000



376
Corneille (Liège 1922 - Paris 2010)
Dans le ciel méditerranéennes
 Signed and dated '65 lower right and numbered *Epreuve d'artiste* lower left
 Lithograph in colours, 99 x 50.4 cm
 € 500 - 800



377
Alfred Eikelenboom
 (Tegal 1936 - Dordrecht 2014)
Untitled
 Aluminium, H. 112.5 cm
 € 500 - 800



378
Douwe Elias
 (Leeuwarden 1952)
View of Franeker
 Signed and dated '87 lower left
 Oil on board (two panels) in original frame, 152.3 x 246.1 cm
 € 1.000 - 3.000



379
Paula Evers
 (Bergen (NH) 1942)
Untitled
 Signed and dated '93 lower left
 Mixed media on paper, 70 x 100 cm
 € 500 - 800



380
Paula Evers
 (Bergen (NH) 1942)
Untitled
 Signed lower left
 Oil on canvas, 99.8 x 109.7 cm
 € 800 - 1.200



381

Jan Eversen

(The Hague 1906 - Arnhem 1995)

Still life with ewer, tin cup and bread

Signed and dated 1971 lower right

Oil on canvas, 51.5 x 71.3 cm

€ 3.000 - 5.000



382

Paula Evers

(Bergen (NH) 1942)

Untitled

Signed and dated '93 lower left

Oil on canvas, 99.5 x 159.8 cm

€ 1.000 - 1.500



383

Herbert Fiedler

(Leipzig 1891 - Amsterdam 1962)

Amstelveld

Signed lower left. Gouache on paper laid down on cardboard, 48.8 x 64.5 cm

€ 500 - 800



384

Herbert Fiedler

(Leipzig 1891 - Amsterdam 1962)

Landschap (landscape)

Signed lower left

Oil on board, 45 x 23.7 cm

€ 500 - 800



385
Kees Franse
 (Oud-Beijerland 1924 - Rotterdam 1982)
Kitchen table
 Signed with initials lower left
 Oil on board, 67.5 x 93 cm
 € 500 - 800



386
Chris van Geest
 (Vlaardingen 1942)
Portrait of Gerard Reve
 Signed and dated 2014 center right
 Oil on canvas, 120.3 x 89.8 cm
 € 500 - 800



387
Chris van Geest
 (Vlaardingen 1942)
The way home
 Signed lower center
 Oil on canvas, 80.3 x 90 cm
 € 500 - 800



388
Gelderse Grafiekmap 1982
 Portfolio comprising the complete set of 8 prints by:
 Alphons Freijmuth, Theo van der Horst, Ronald Tolman, Hugo de Clercq, Annemiek Stegerman, Jan Roeland, Henk Peeters and Janas Bitten Bittenbinder
 All signed, dated and numbered 95/100. Published by Stichting Signature, Brummen, 1982. Portfolio, H. 68 x W. 53 x D. 3.5 cm
 € 500 - 1.000



389
Karel Gomes
 (Hillegersberg 1930)
Baigneuse
 Signed with initials on the foot
 Bronze, H. 29 cm
 € 500 - 800



390
Ans van Haersolte
 (Arnhem 1911 - Wassenaar 1991)
Two figures
 Both concrete, H. 87 & 141 cm
 (2x)
 € 1.000 - 1.500



391
Dolf Henkes
 (Rotterdam 1903 - 1989)
Clown
 Monogrammed lower left
 Oil on paper on cardboard, 50.6 x 34.7 cm
 € 500 - 800



392
Dolf Henkes
 (Rotterdam 1903 - 1989)
Harlequin
 Monogrammed upper right
 Oil on board, 64.9 x 50 cm
 € 500 - 1.000



393
Anton Heyboer
 (Sabang 1924 - Den IJp 2005)
Ymuiden Mari
 Signed and dated 1980 lower left. Signed lower right. Hand coloured etching on paper, 60.8 x 60.6 cm (measured within the frame)
 € 700 - 900



394
Gino Hollander
 (Newark 1924 - New Port Beach 2015)
Algodonales
 Signed, titled and dated 9.86 on the reverse
 Oil on canvas, 85.1 x 169.9 cm
 € 500 - 800



395
Machiel Hopman
 (The Hague 1928 - Lochem 2001)
Untitled (triptych)
 Signed on the right panel
 All acrylic on board, all approx. 100 x 60 cm
 € 500 - 1.000



396
Nic Jonk
 (Schermerhorn 1928 - Alkmaar 1994)
The wrestlers
 Indistinctly signed and dated '59 underneath. Edition 12. Bronze, H. 16 cm
 € 500 - 800



397
Harm Kamerlingh Onnes
 (Zoeterwoude 1893 - Leiden 1985)
Vlaggetjesdag
 Monogrammed and dated '80 lower left
 Mixed media on cardboard, 20.5 x 24.1 cm
 € 500 - 800



398
Kasparus Karsen
 (Amsterdam 1810 - Bieberich am Rhein 1896)
Fishermen by a castle
 Signed lower center on the stone
 Oil on panel, 20.3 x 25.6 cm
 € 700 - 900



399
Otto B. de Kat
 (Dordrecht 1907 - Laren (NH) 1995)
Portrait of a seated women
 Signed lower left
 Oil on canvas, 60 x 44.6 cm
 € 500 - 800



400
Otto B. de Kat
 (Dordrecht 1907 - Laren (NH) 1995)
Westerpark
 Signed lower right
 Oil on canvas, 41.2 x 50.3 cm
 € 600 - 1.000



401
Kim Geun Bae
 (Pyung-Tak 1969)
Transfer
 Signed and dated 98 on the base
 Bronze on stone base, H. 80.5 cm
 € 600 - 1.000



402
Willem Alexander Knip
 (Amsterdam 1888 - Blaricum 1967)
Sailing boats leaving Volendam harbour
 Signed lower right
 Oil on canvas, 50.4 x 40.8 cm
 € 500 - 700



403
Herman Kruyder
 (Lage-Vuursche 1881 - Amsterdam 1935)
Girl with blue hat
 Signed lower left
 Oil on board, 26.7 x 23.6 cm
 € 1.000 - 1.500



404
Willy Martens
 (Semarang 1856 - The Hague 1927)
At the well
 Signed lower right
 Watercolour and gouache on paper,
 55.6 x 45.5 cm
 € 500 - 1.000



405
Attributed to Johannes Cornelius Mertz
 (Amsterdam 1819 - Brussels 1891)
The oyster meal
 Oil on copper, 35.5 x 28.6 cm
 € 500 - 800



406
Adolphe Monticelli
 (Marseille 1824 - Marseille/Paris 1886)
Cinq personnages et chien dans le parc
 Signed lower left
 Oil on panel, 36.4 x 48.2 cm
 € 2.000 - 4.000



407
Robert Pudlich
 (Dortmund 1905 - Dusseldorf 1962)
Landschaft
 Signed lower right. Oil on canvas laid down
 on panel, 21 x 23 cm
 € 400 - 600



408
Betsy Repelius
 (Amsterdam 1848 - 1921)
Happy harvest
 Signed lower right
 Oil on canvas, 77.1 x 55.3 cm
 € 500 - 1.000



409
Arthur Ressel
 (Gablonz 1896 - 1966)
Faun balauscht ein Mädchen
 Monogrammed and dated 1945 lower
 right. Signed and titled on the reverse
 Oil on panel, 52.9 x 49 cm
 € 500 - 800



410
Albert Roelofs
 (Schaarbeek 1877 - The Hague 1920)
In the artist's studio
 Signed lower right
 Mixed media on paper, 28.9 x 22.1 cm
 € 2.000 - 4.000



411

Willem Roelofs

(Amsterdam 1822 - Berchem 1897)

Watering cows

Signed lower left. Oil on canvas, 69 x 107 cm

Provenance:

- Auction Sotheby's, Amsterdam, 27 October 1999, lot 277

- Private collection, the Netherlands

€ 30.000 - 50.000



412

After Peter Paul Rubens

(circa 1700)

Adoration by the Magi

Oil on canvas, 82.5 x 65 cm

€ 500 - 1.000



413

Jan Schoonhoven

(Hof van Delft 1914 - Delft 1994)

a) XXV

Signed and dated 1988 lower right

Titled lower center and numbered OM
49/55 lower left

Lithograph, 49.7 x 59.7 cm



b) XV

Signed and dated 1983 lower right

Titled and numbered *eda/2* lower left

Lithograph, 65.8 x 50.3 cm

Provenance: From the family of the artist
(2x)

€ 500 - 800



414

Virginie de Sartorius

(Liège 1828 - after 1874)

A still life with roses, carnations, violets and other flowers, peaches and a melon and a sculpture probably of Louise-Marie of Orleans, on a marble ledge against a curtain, the Palace of Laken in the background

Signed and dated 1851 lower left. Oil on canvas, 118.9 x 100.6 cm (oval)

Provenance:

- Auction Christie's, Amsterdam, 19 October 1993, lot 180

- Private collection, the Netherlands

€ 3.000 - 5.000



415
Jan Schoonhoven
 (Hof van Delft 1914 - Delft 1994)
 a) VI
 Signed and dated 1972 lower right
 Titled and numbered *ongenummerde druk*
 Lithograph, 50 x 33 cm



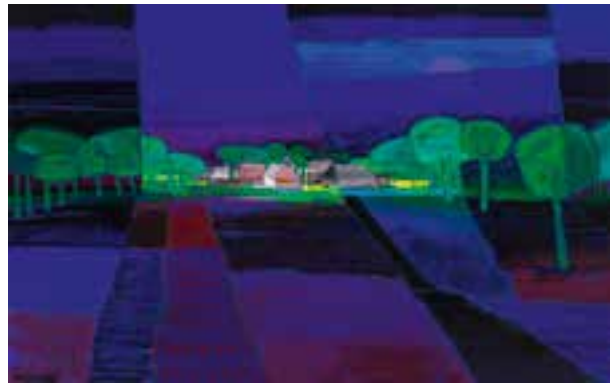
b) III
 Signed and dated 1977 lower right
 Titled lower center and numbered 82/100
 lower left.
 Lithograph, 50.1 x 33 cm
 (2x)
 € 500 - 800



416
Jan Schoonhoven
 (Hof van Delft 1914 - Delft 1994)
 Vorm: Portfolio containing 6 lithographs by
 Jan Schoonhoven and 6 texts by Hans Sleutelaar
 Edition 32/50, all lithographs ca. 50 x 32.5 cm
 € 800 - 1.200



417
Ton Schulten
 (Ootmarsum 1938)
Autumn
 Signed lower right. Oil on canvas in original
 frame, 156.7 x 132.2 cm
 € 800 - 1.200



418
Ton Schulten
 (Ootmarsum 1938)
Twentse essen
 Signed lower left
 Oil and acrylic on canvas, 119.1 x 189.5 cm
 € 1.000 - 1.500



419
Thamine Tadama-Groeneveld
 (Utrecht 1871 - Zandvoort 1938)
Shell fishers in the surf
 Signed lower right
 Oil on canvas, 75.7 x 100.9 cm
 € 2.000 - 2.500



420
Charley Toorop
 (Katwijk aan Zee 1891 - Bergen (NH) 1955)
Alassio
 Signed, titled and dated 1938 lower left
 Black chalk on paper, 49 x 63.5 cm (measured
 within the mount)
 € 1.000 - 2.000



421
Leon Veerman
 (Bodegraven 1950)
Aarde's klaagzang (1995)
 Signed with initials, dated 95 and numbered
 1/3 on inside of the curve
 Bronze on hardstone base, H. 133 cm
 € 800 - 1.200



422
Geer van Velde (Lisse 1898 - Cachan 1977)
Face
 Signed with initials lower right.
 Gouache on paper, 17.6 x 11.6 cm (measured within the mount)
 € 500 - 800



423
Aat Veldhoen
 (Amsterdam 1934)
Natasha (2003)
 Signed lower right
 Oil on canvas, 140 x 100.2 cm
 € 600 - 1.000



424
Piet van Wijngaerdt
 (Amsterdam 1873 - Abcoude 1964)
Souvenir Heeze (N. Br)
 Signed and dated 53 lower left.
 Oil on canvas, 96.6 x 75.7 cm
 € 500 - 800



425
Hendrik Jan Wolter
 (Amsterdam 1873 - Amersfoort 1952)
Trajan's Column, Rome
 Signed lower left
 Oil on panel, 22 x 27 cm
 € 500 - 800



426
Paul Wunderlich
 (Eberswalde 1927 - St-Pierre-de-Vassols 2010)
Aphrodite
 Stamped with artist's signature lower right
 Numbered 254/900 and dated 1979
 Bronze relief with brown patina, 32.4 x 24.4 cm
 € 500 - 800



427
Adrianus van Zeegen jr.
 (Amsterdam 1881 - 1966)
Kleurendroom
 Signed and dated 1913 lower right
 Signed, titled and dated 1913 on the reverse.
 Oil on canvas, 77.8 x 70.8 cm
 € 500 - 800

WAT IS NU
EEN MOOIER
CADEAU DAN
VRIENDSCHAP?
AL VOOR €50



RIJKSMUSEUM.NL/VRIENDEN
RIJKS MUSEUM

FOUNDER

PHILIPS

HOOFDSPONSOREN

BankGiroLoterij

ING 

 kpn

FLEXHOME-ONE

THE ART OF NEW LIVING

- TINY HOUSE - STARTERS
- MANTELZORG - STATUSHOUDERS
- ENERGIE NEUTRAAL EVT. OFF-GRID
- INCL. KOMPLETE KEUKEN/BADKAMER
- SLEUTELKLAAR VANAF € 60.000 EX BTW



WWW.VERSTRAETENDESIGN.COM
WWW.FLEXHOME-ONE.NL
ROERDALEN - BERLIN
TEL: + 31-6-55744066

KYRA TEN CATE



www.kyratencate.com



Kröller
Müller

30 SEP 2018

03 FEB 2019



ALS KUNST JE LIEF IS

Ontdek in één
tentoonstelling
80 belangrijke
aanwinsten voor
40 musea!



Vereniging
Rembrandt

Op initiatief van de Vereniging Rembrandt organiseert het Kröller-Müller Museum de tentoonstelling *Als kunst je lief is*. Voor één keer zijn ruim tachtig belangrijke aankopen van veertig Nederlandse musea bijeengebracht die de afgelopen tien jaar mede zijn verworven met steun van de Vereniging.

Als kunst je lief is toont de volle breedte van de museale aankopen: van een 3000 jaar oud Egyptisch beeld uit het Allard Pierson Museum in Amsterdam tot een schilderij van Neo Rauch uit Museum de Fundatie in Zwolle dat twee jaar geleden nog in het atelier van de kunstenaar stond.

Feest van onverwachte ontmoetingen

De tentoonstelling is een feest van onverwachte ontmoetingen van kunstwerken en objecten die met grote zorg zijn geësceneerd. Zo hangt een monumentaal zestiende-eeuws Bijbels historiestuk uit het Stedelijk Museum in Alkmaar naast een reusachtige foto van Andreas Gursky uit 2007 uit het Stedelijk Museum te Amsterdam, en is een prototype

stoel van Rietveld uit de collectie van het Centraal Museum in Utrecht geflankeerd door een schilderij van Alma-Tadema uit het Fries Museum in Leeuwarden en een zeventiende-eeuws bloemstilleven uit het Mauritshuis. Onderweg krijgt de bezoeker inzicht in de verwervingsgeschiedenis van de individuele aankopen, stuk voor stuk publiekslievelingen, en de soms spannende route die moest worden afgelegd om het felbegeerde werk te verwerven.

Het Kröller-Müller Museum is geopend van dinsdag tot en met zondag en op feestdagen van 10.00 uur tot 17.00 uur, de beeldentuin sluit om 16.30 uur. Op 1 januari is het museum gesloten. De tentoonstelling *Als kunst je lief is* is van 30 september 2018 t/m 3 februari 2019 te bezoeken.

Koop je ticket: www.alskunstjeliefis.nl



Please note:

Faults or imperfections are not recorded in the lot description. We encourage you to inspect the lots during our viewing days. Condition reports are available upon request.

Before picking up your acquisition, the payment has to be received on bank account: NL28FVLB0637264002 in the name of Stichting Dergengelden. Payments in cash, debit- or credit card are accepted by AAG Auctioneers. For credit card payments a surcharge is applicable.

You are requested to collect the acquired item(s) within five days after the auction. After five days this can be done by appointment only.

AAG shall have the right to put items that have been sold but not yet collected into storage at the buyer's expense after five working days.

The applicable handling fee per item is:
transportation € 10,- / storage € 5,- per day.

invaluable

Invaluable is the world's leading online marketplace for fine art and antiques partnering with AAG to provide you first-class online bidding.



invaluable.com/AAG

ALGEMENE VEILINGVOORWAARDEN

Deze voorwaarden zijn van toepassing op alle veilingen van Arts & Antiques Group v/h Glerum Kunst- en Antiekveilingen B.V. (hierna 'AAG' genoemd). Een ieder die aan de veiling deelneemt, geeft daarmee te kennen dat hij de toepasselijkheid van deze voorwaarden aanvaardt. De toepasselijkheid van deze voorwaarden wordt bij aanvang van de veiling aan de deelnemer kenbaar gemaakt.

In deze algemene veilingvoorwaarden wordt verstaan onder:

- a. Veiling: de verkoop bij opbod van de kavel in het openbaar;
- b. Kavel: de roerende zaak of samenstelling van roerende zaken onder één nummer geveild;
- c. Bod: door eenieder op een in de veiling aangeboden kavel geboden bedrag;
- d. Bieder: degene die in de veiling een bod uitbrengt;
- e. Koper: de bieder, aan wie een kavel wordt toegewezen;
- f. Toewijzing: de verklaring van de veilingmeester waardoor een bod wordt geaccepteerd en waardoor de koopovereenkomst tussen de inzender en de koper tot stand komt;
- g. Inzender: degene die aan AAG de kavel ter veiling heeft aangeboden;
- h. Hamerprijs: bedrag waarvoor de kavel door de veilingmeester aan de koper is toegewezen;
- i. Koopprijs: hamerprijs vermeerderd met een toeslag terzake van opgeld en BTW en, indien van toepassing, met verschuldigd volgrecht. Afhankelijk van de hoogte van het hamerbedrag wordt aan de koper opgeld in rekening gebracht als volgt:

Tot € 20.000	29,6% (incl. 21% BTW)
€ 20.001 - € 200.000	25% (incl. 21% BTW)
Vanaf € 200.001	20% (incl. 21% BTW)

In het opgeld is de daarover verschuldigde BTW verrekend.

ARTIKEL 1

1. Elk bod is onvoorwaardelijk en onherroepelijk.
2. Degene, die ter veiling een bod uitbrengt, wordt aangemerkt als bieder, ook als hij verklaart niet voor zichzelf te hebben geboden.
3. Indien een koper heeft geboden op last of voor rekening en risico van één of meerdere anderen is of zijn deze naast de koper hoofdelijk verbonden voor de op koper krachtens deze veilingvoorwaarden rustende verplichtingen.

ARTIKEL 2

1. AAG is gerechtigd de volgorde van de te veilen kavels te wijzigen, kavels samen te voegen dan wel te splitsen, één of meerdere kavels uit de veiling te nemen en tijdens de veiling over de kavels aanvullende of afwijkende informatie te verschaffen.
2. De veiling geschiedt in door de veilingmeester aan te geven steeds hogere biedstappen; door het uitbrengen van biedingen wordt het laatste bod automatisch verhoogd tot de volgende biedstap.
3. De veilingmeester heeft het recht, zonder opgave van redenen een bod niet als zodanig te erkennen en het bieden te doen voortgaan.
4. De veilingmeester is gerechtigd namens niet bij de veiling aanwezige gegadigden biedingen uit te brengen.
5. Het oordeel van de veilingmeester omtrent alles wat zich tijdens de veiling voordoet en omtrent de uitleg of toepassing van de Algemene Veilingvoorwaarden tijdens de zitting is - bij wijze van bindend advies - beslissend.

ARTIKEL 3

1. AAG staat er voor in, dat behoudens nadrukkelijke vermelding tijdens de veiling, elke kavel overeenstemt met de beschrijving ervan in de catalogus.

2. Koper is gerechtigd ontbinding van de koop te vorderen en heeft recht op restitutie van de koopprijs, indien hij binnen 30 (dertig) dagen na de veiling deugdelijk aantoonde dat de kavel zo ernstige gebreken vertoont of de verstrekte omschrijving zodanig onjuist is, dat indien deze gebreken of de onjuiste omschrijving aan de koper op het ogenblik van de veiling bekend waren geweest, hij van de koop zou hebben afgezien of slechts tegen een aanmerkelijk lagere prijs zou hebben gekocht.
3. Koper heeft voormeld recht niet indien het gebrek of de onjuistheid van de beschrijving tijdens de veiling is kenbaar gemaakt of na het moment van toewijzing is ontstaan.

ARTIKEL 4

1. Een kavel wordt verkocht en gaat over op de koper in de toestand waarin de kavel zich bevindt op het tijdstip van toewijzing.
2. Vanaf het moment van toewijzing is de kavel onmiddellijk en geheel voor rekening en risico van de koper.

ARTIKEL 5

1. De levering van de kavel aan de koper of diens gemachtigde vindt plaats nadat AAG de koopprijs heeft ontvangen.
2. De koopprijs dient uiterlijk binnen drie dagen na de veiling aan AAG te zijn voldaan, bij gebreke waarvan de koper vergoeding is verschuldigd van de kosten van vervoer, opslag en verzekering, benevens een rente, gelijk aan de wettelijke rente. Deze rente wordt berekend vanaf de datum der veiling tot de dag der algehele voldoening.
3. AAG heeft het recht om verkochte, niet afgehaalde goederen na vijf werkdagen op kosten van de koper in opslag te geven.
4. Indien de koper 30 (dertig) dagen na de veiling de koopprijs niet of niet volledig heeft voldaan, is hij in gebreke en is AAG gerechtigd onmiddellijk invorderingsmaatregelen te treffen, dan wel de koopovereenkomst als ontbonden te beschouwen en de kavel, hetzij openbaar, hetzij onderhands te verkopen.
5. De nalatige koper is aansprakelijk voor de door AAG tengevolge van de ontbinding en verkoop als hiervoor bedoeld geleden schade en heeft nimmer aanspraak op een meeropbrengst uit zodanige verkoop.
6. Alle kosten die AAG redelijkerwijs heeft moeten maken terzake van het niet nakomen door koper van enige verplichting voortvloeiende uit deze voorwaarden zijn voor rekening voor koper.

ARTIKEL 6

BTW wordt met toepassing van de z.g. margeregeling slechts in rekening gebracht over het opgeld en eventuele overige kosten. In de koopprijs zoals bedoeld in deze voorwaarden is BTW over het opgeld reeds inbegrepen. Kopers die daarvoor in aanmerking komen kunnen verzoeken ook de hamerprijs in de heffing van BTW te betrekken. Bij de kavels, die ter veiling zijn ingevoerd in de Europese Unie, wordt de hamerprijs steeds in de heffing van BTW betrokken; de betreffende kavels zijn in de veilingcatalogus aangeduid met (*).

ARTIKEL 7

1. Op de rechtsbetrekking tussen de koper(s) en AAG is Nederlands recht van toepassing.
2. Bij verschillen tussen de Nederlandse tekst en enige buitenlandse vertalingen van deze voorwaarden of van de veilingcatalogus is de Nederlandse tekst beslissend.

TERMS AND CONDITIONS

These terms and conditions apply to all auctions held by Arts & Antiques Group, f.k.a. Glerum Kunst- en Antiekveilingen B.V. (hereinafter referred to as: 'AAG'). Participants are informed at the beginning of an auction that these terms and conditions are applicable. Participation in an auction implies acceptance of these terms and conditions.

In these terms and conditions:

- a. auction means a public auction sale of a lot;
- b. lot means the item or set of items of movable property sold by auction under one number;
- c. bid means the price offered by a bidder for a lot offered for sale at the auction;
- d. bidder means anyone making a bid at the auction;
- e. buyer means the bidder to whom a lot is knocked down;
- f. knock-down means the statement by the auctioneer that a bid is accepted, as a result of which a contract of sale and purchase is concluded between the consignor and the buyer;
- g. consignor means the person who has consigned the lot to AAG for auction;
- h. hammer price means the price at which the auctioneer knocks down a lot to the buyer;
- i. purchase price means the hammer price plus buyer's premium (including VAT) and, where appropriate, any resale royalty.

Depending on the hammer price the buyer will be charged the following premium:

Up to € 20.000	29,6%
€ 20.001 - € 200.000	25%
From € 200.001	20%

All percentages are including VAT.

ARTICLE 1

1. Each bid shall be unconditional and irrevocable.
2. Anyone making a bid at an auction shall be deemed to be a bidder, even if the individual in question declares that he has not made a bid on his own behalf.
3. If a buyer has made a bid on behalf and at the expense and risk of one or more third parties, such third party/parties and the buyer shall be jointly and severally liable for the fulfilment of the obligations incumbent upon the buyer under these auction terms and conditions.

ARTICLE 2

1. AAG shall have the right to change the order in which the lots are sold, to combine or divide lots, to withdraw one or more lots, and to furnish additional or different information on the lots at the auction.
2. The auctioneer shall determine the bid increments; a new bid shall automatically increase the standing bid by the applicable bid increment.
3. The auctioneer shall have the right to refuse a bid without giving reasons, and to continue the bidding process.
4. The auctioneer shall have the right to make bids on behalf of prospective buyers who are not at the auction.
5. The auctioneer's decision made at the auction regarding any occurrence during the auction and regarding the interpretation or application of the auction terms and conditions shall, by way of a binding opinion, be absolute and final.

ARTICLE 3

1. AAG guarantees that each lot conforms with its description in the catalogue, except as expressly stated otherwise at the auction.
2. The buyer shall have the right to demand rescission of the sale and a refund of the purchase price if he satisfactorily demonstrates, within thirty (30) days of the auction date, that the lot is defective or that its description is incorrect to such an extent that if the buyer had been aware of the defects or incorrect description at the time of the auction, he would not have purchased the lot or would have purchased it only at a substantially lower price.
3. The buyer shall not have the aforesaid right if the defect or incorrect description is announced at the time of auction or has arisen after the knock-down.

ARTICLE 4

1. A lot shall be sold and title thereto shall pass to the buyer in the condition in which the lot is at the time of knock-down.
2. The lot shall be entirely at the buyer's expense and risk from the time of knock-down.

ARTICLE 5

1. The lot shall be transferred to the buyer or the buyer's representative after AAG has received the purchase price.
2. The purchase price must be paid to AAG within three days of the auction, failing which the buyer shall be required to pay the costs of transport, storage and insurance, plus interest at the rate of statutory interest. Such interest shall be calculated from the date of the auction until the date of payment in full.
3. AAG shall have the right to put items that have been sold but not yet collected into storage at the buyer's expense after five working days.
4. If the buyer has not paid the (full) purchase price within thirty (30) days of the auction date, the buyer shall be in default and AAG shall have the right to take immediate action to recover the outstanding debt, or to consider the contract of sale and purchase cancelled and to sell the lot by auction or private treaty.
5. A defaulting buyer shall be liable for any loss or damage sustained by AAG as a result of a cancellation and sale as referred to above and shall not be entitled to any surplus arising from such sale.
6. Any costs reasonably incurred by AAG in connection with the non-fulfilment by the buyer of any obligation arising from these terms and conditions shall be payable by the buyer.

ARTICLE 6

In accordance with the margin scheme, VAT is charged only on the premium and any other charges. The purchase price referred to in these terms and conditions includes VAT on the premium. Buyers entitled to opt for application of the margin scheme may request that VAT also be charged on the hammer price. The hammer price of lots imported for auction from outside the European Union is always subject to VAT; the lots in question are marked in the auction catalogue with an asterisk (*).

ARTICLE 7

1. The legal relationship between the buyer(s) and AAG shall be governed by the laws of the Netherlands.
2. In the event of a conflict or inconsistency between the Dutch text and any translation of these terms and conditions or the auction catalogue, the Dutch text shall prevail.



Biedformulier

Bid form

508 - THE CHRISTMAS SPECIAL

Ondergetekende verklaart akkoord te zijn met de veilingvoorwaarden The undersigned agrees to the conditions of sale

Naam (dhr/mw) | Name (mr/mrs) _____

Adres | Address _____

Postcode | Code _____ Plaats | City/Country _____

Telefoon | Phone _____

Bankreferentie | Bank reference _____

E-mail _____

Handtekening | Signature _____

Lot no.	Omschrijving Description	Maximum bedrag bid in €

